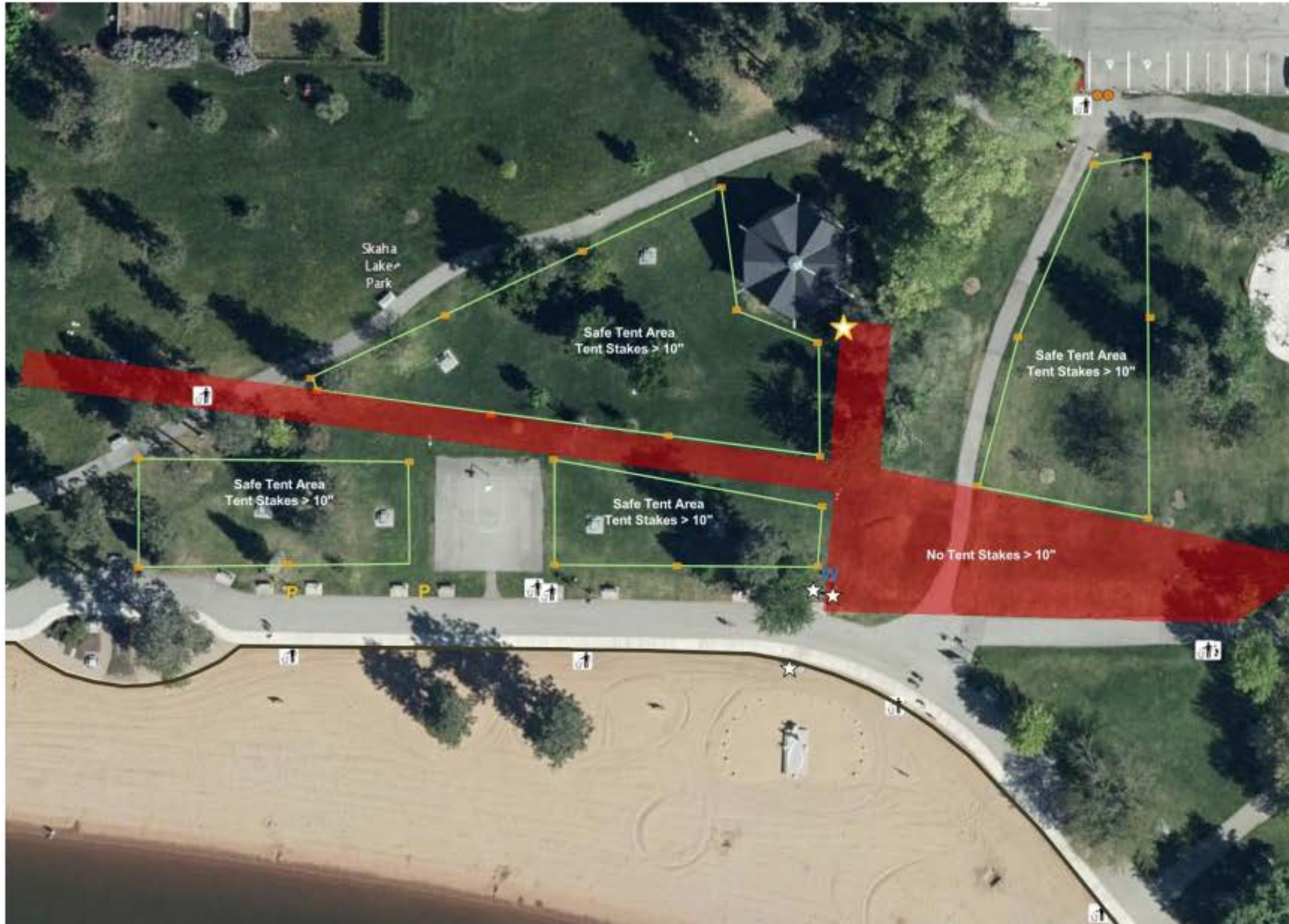


Skaha Beach Park

Skaha Park



Legend

- Safe Tent Area > 10" Stakes Allowed
- Utility Area < 10" Stakes Only
- Safe Tent Area Markers
- P 2x 110V, 15A Electrical (Attached to Bollard)
- W Potable Water (in-ground, needs spigot)
- ★ Main Electrical Panel (Electrician Access)
- ☆ Power Pedestal – 2x 220V, 50 amp, 2x 110V, 15 amp and Potable Water
- ♻️ Garbage Disposal
- ♿ Washroom

Terms of Use: The City of Penticton is a depository of Public information in both printed and digital form. The source, accuracy and completeness of this information varies. As a result, the City does not warrant in any way the mapping information including the accuracy or suitability thereof. The user of this information does so at their own risk and should not rely upon the information without independent verification as to the accuracy or suitability thereof.