



EVACUATION ORDER

November 21, 2023, 1700

1701 Penticton Ave. (Pleasant Valley Mobile Park)

Pursuant of the BC *Emergency and Disaster Management Act* an **Evacuation Order** has been issued by the City of Penticton to protect the health, safety or welfare of a person or to limit damage to property due to **geological instability**

Members of the local RCMP detachment and/or other agencies under the direction of the City of Penticton will be expediting this action.

The **Evacuation Order** is in effect for the following area:

- | | |
|-----------------------|------------------------|
| 1-1701 Penticton Ave | 15-1701 Penticton Ave |
| 2-1701 Penticton Ave | 38-1701 Penticton Ave |
| 3-1701 Penticton Ave | 39-1701 Penticton Ave |
| 4-1701 Penticton Ave | 40-1701 Penticton Ave |
| 5-1701 Penticton Ave | 41-1701 Penticton Ave |
| 6-1701 Penticton Ave | 64-1701 Penticton Ave |
| 7-1701 Penticton Ave | 111-1701 Penticton Ave |
| 8-1701 Penticton Ave | 112-1701 Penticton Ave |
| 9-1701 Penticton Ave | 113-1701 Penticton Ave |
| 10-1701 Penticton Ave | 151-1701 Penticton Ave |
| 12-1701 Penticton Ave | 152-1701 Penticton Ave |
| 13-1701 Penticton Ave | 153-1701 Penticton Ave |
| 14-1701 Penticton Ave | |

For more information call 250-490-2307, ext. 6 or visit the City of Penticton website at www.penticton.ca.

Mayor Julius Bloomfield
City of Penticton

Schedule 1 – List of Properties

1-1701 Penticton Ave
2-1701 Penticton Ave
3-1701 Penticton Ave
4-1701 Penticton Ave
5-1701 Penticton Ave
6-1701 Penticton Ave
7-1701 Penticton Ave
8-1701 Penticton Ave
9-1701 Penticton Ave
10-1701 Penticton Ave
12-1701 Penticton Ave
13-1701 Penticton Ave
14-1701 Penticton Ave

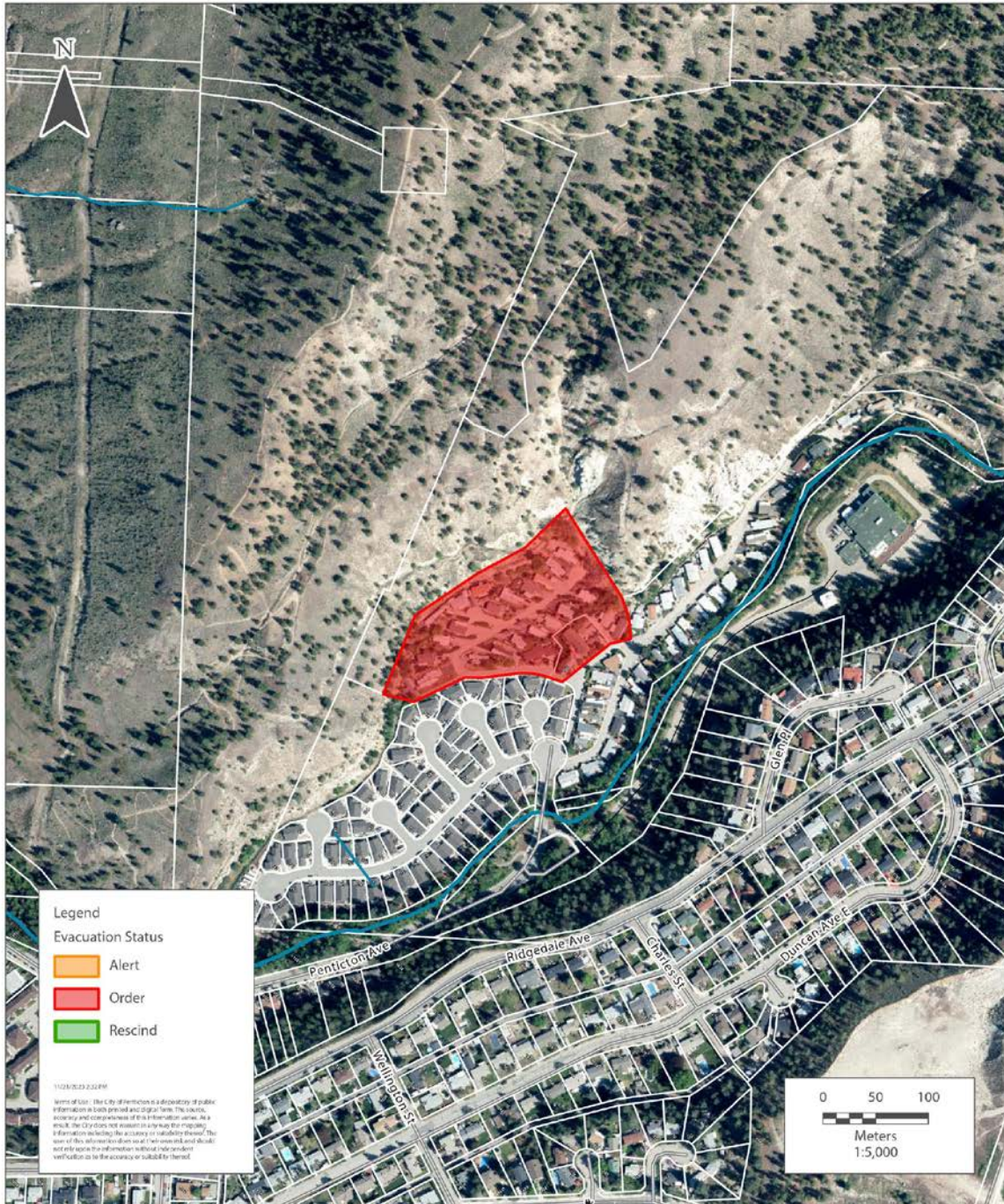
15-1701 Penticton Ave
38-1701 Penticton Ave
39-1701 Penticton Ave
40-1701 Penticton Ave
41-1701 Penticton Ave
64-1701 Penticton Ave
111-1701 Penticton Ave
112-1701 Penticton Ave
113-1701 Penticton Ave
151-1701 Penticton Ave
152-1701 Penticton Ave
153-1701 Penticton Ave

YOU MUST LEAVE THE AREA IMMEDIATELY

Schedule 2- Evacuation Order Map



City of Penticton Penticton Ave Geological Incident - Order



Residents under an Evacuation Order can register with Emergency Support Services (ESS): <https://ess.gov.bc.ca/> This site increases the speed of ESS services for potential evacuees. Alternatively you can register in person at the ESS Reception Centre set up at **Penticton Fire Station 202, 285 Dawson Ave.**

Please visit the City of Penticton website for regular updates www.penticton.ca.

WHAT YOU SHOULD DO:

- Follow the travel route identified on the map provided and register online at: <https://ess.gov.bc.ca/> or, if not possible, register in person at the ESS Reception Centre at 285 Dawson Ave.
- If you need transportation assistance from the area, advise the person providing this notice or call 250-490-2307, ext. 6.
- Shut off all appliances, other than refrigerators and freezers.
- Close all windows and doors.
- Close gates (latch) but do not lock.
- Gather your family and, if you have room, take a neighbour or someone needing transportation. Do not use more vehicles than you have to.
- Take critical items (medicine, purse, wallet, and keys) only if they are immediately available. Take pets in pet kennels or on leash. Pet owners and hobby farmers with concerns for their animals: Animal Emergency Response Team (ALERT) can help, call (250) 809 – 7152.