



# Committee of the Whole

[penticton.ca](http://penticton.ca)

**Committee of the Whole**  
to be held at  
City of Penticton, Council Chambers  
171 Main Street, Penticton, B.C.

**Tuesday, September 20, 2016**  
**Recessed from the Regular Council Meeting at 1:00 p.m.**

1. **Call Committee of the Whole to Order**
2. **Adoption of Agenda**
3. **Delegations and Staff Presentations:**
  - 3.1 Proclamation - Alzheimer's Awareness Day – September 21, 2016 1
  - 3.2 100 Homes Penticton – Ian Gerbrandt and Tanya Behardien 2
  - 3.3 Kelowna Airport Master Plan 2045 – Phillip Elchitz, Senior Operations Manager 3-18
4. **Adjourn to Regular Meeting of Council**

# Proclamation

[penticton.ca](http://penticton.ca)

## World Alzheimer's Day September 21, 2016

**WHEREAS** the global community now faces extraordinary health, social and environmental challenges such as an aging population and the development of dementia and Alzheimer's Disease; and

**WHEREAS** all people, of all races, all genders, all creeds, all incomes, and of all sexual orientation and geography, have a moral right to healthy, supportive environments, regardless of their disability; and

**WHEREAS** it is understood that the citizens of the global community must step forward and take action to create positive social change to combat the aforementioned global challenges; and

**WHEREAS** a sustainable Dementia Friendly Community can be achieved on the individual, organization and governmental level through educational efforts, collaborative and thoughtful actions, public policy, and consumer activism campaigns; and

**WHEREAS** it is necessary to broaden and diversify the dementia friendly community movement to achieve maximum success;

**NOW THEREFORE**, The Dementia Friendly Community Working Group, (CITY) wish to thank all of the individuals and community partners in (CITY) who have come together to create the intention to implement international standards and best practices in our community and encourage others to undertake similar actions.

**NOW THEREFORE** I, Andrew Jakubeit, Mayor of the City of Penticton, **DO HEREBY PROCLAIM** September 21, 2016 as **Alzheimer's Awareness Day** in the City of Penticton.

A handwritten signature in black ink, appearing to read "Andrew Jakubeit".

---

Mayor Andrew Jakubeit



### Request to Appear as a Delegation

Preferred Council Meeting Date: Sep. 19 / 16

Second choice(s): Oct. 3 / 16

Subject matter: 100 Homes Penticton

Name of person(s) making presentation:

Jan Gerbrandt & Tanya Behardien

Address: 390 Main St.

Phone: \_\_\_\_\_

Email: \_\_\_\_\_

Please provide details of your presentation:

100 Homes Penticton is a collective of community
leaders who are working together to provide
housing and supports to 100 <del>not</del> vulnerable
people in our community by July 2018. The local
initiative is part of the 20,000 Homes Campaign (20kHomes.ca)
organized by the Canadian Alliance to End Homelessness. We
ask Council to help us raise awareness and
endorse the national campaign's vision and goals.

Please note:

- This form and its content is part of the public record.
- Written copies of your submission must be presented to the Corporate Officer by 9:30 a.m. on the Wednesday before the meeting either by email, fax or in person.
- PowerPoint presentations must be emailed no later than 9:30 a.m. the date of the meeting. We recommend you bring backup PowerPoint files with you on a memory stick.
- Delegations are limited to 5 minutes.

**Corporate Office**  
 Dana Schmidt, Corporate Officer  
 171 Main Street, Penticton, B.C., V2A 5A9

Phone: 250-490-2405  
 Fax: 250-490-2402  
[dana.schmidt@penticton.ca](mailto:dana.schmidt@penticton.ca)



Kelowna International Airport

# Master Plan 2045

Preliminary Draft Summary

Summer 2016



SNC • LAVALIN

# YLW Master Plan

## About

- Supports YLW's vision to become the best mid-sized airport in North America
- Supports the Drive to 1.6 Million Passengers Program and the Flight to 2020 Projects (Ongoing)
- Picks up where the 2025 Master Plan left off to guide airport planning and development
- Informs the City's Official Community Plan (OCP)
- Includes a Five Year Strategic Plan



# YLW Master Plan 2045

## Timeline: Three-phase Approach

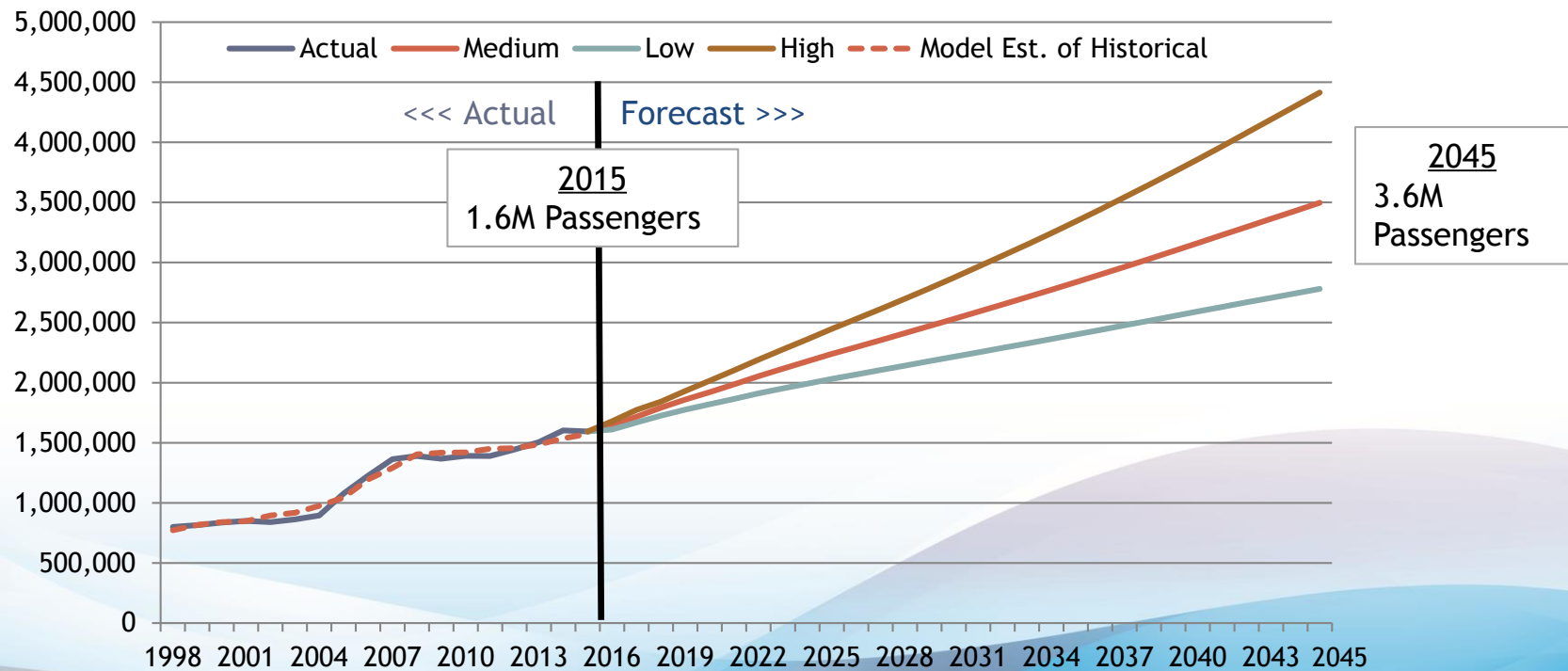


# Air Traffic Growth



## Passengers

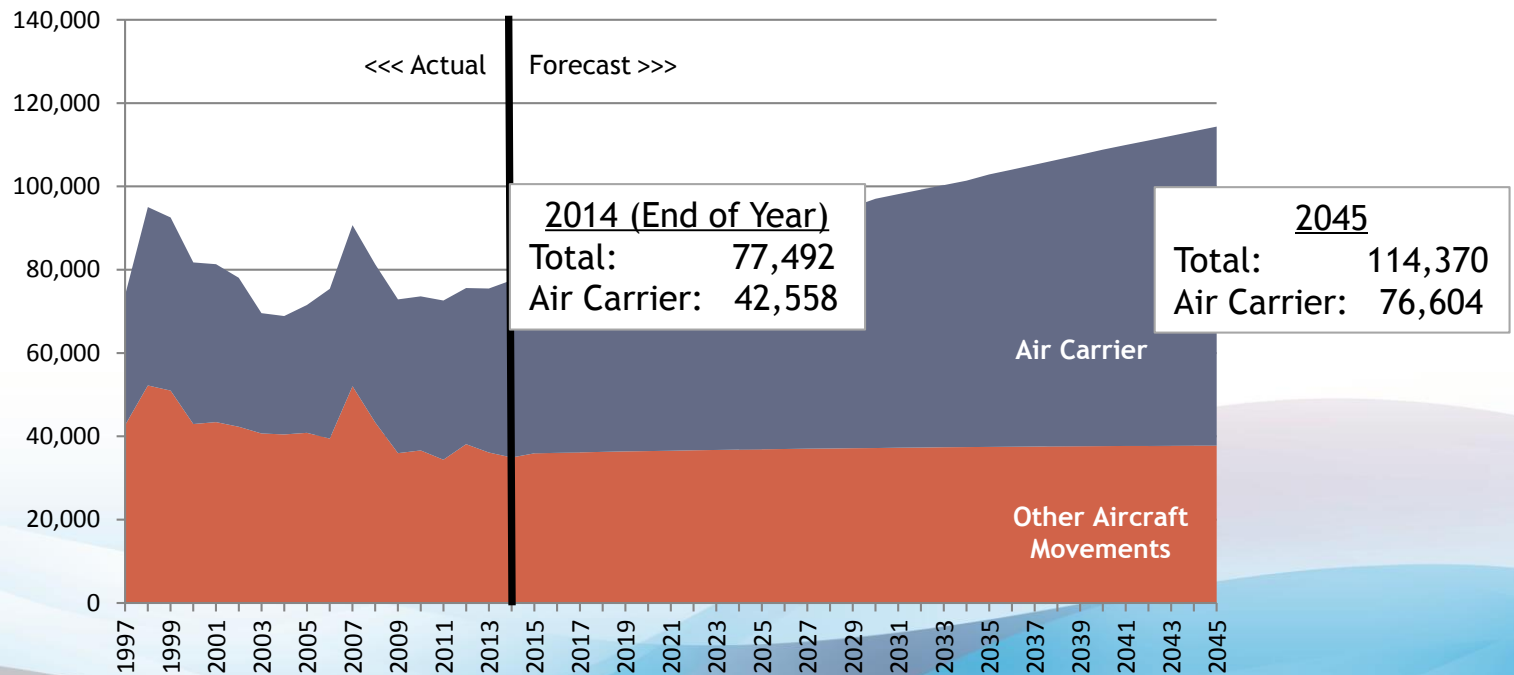
Passenger growth to continue at **3% annually** (medium forecast)



# Air Traffic Growth

## Aircraft Takeoffs and Landings

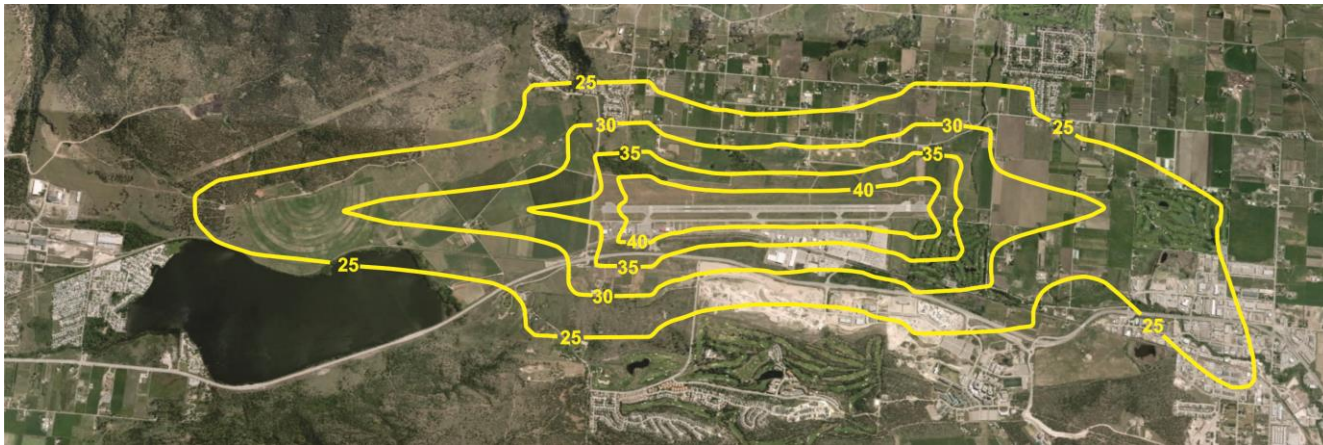
**Growth at 2% per year** (majority attributable to air carrier services)



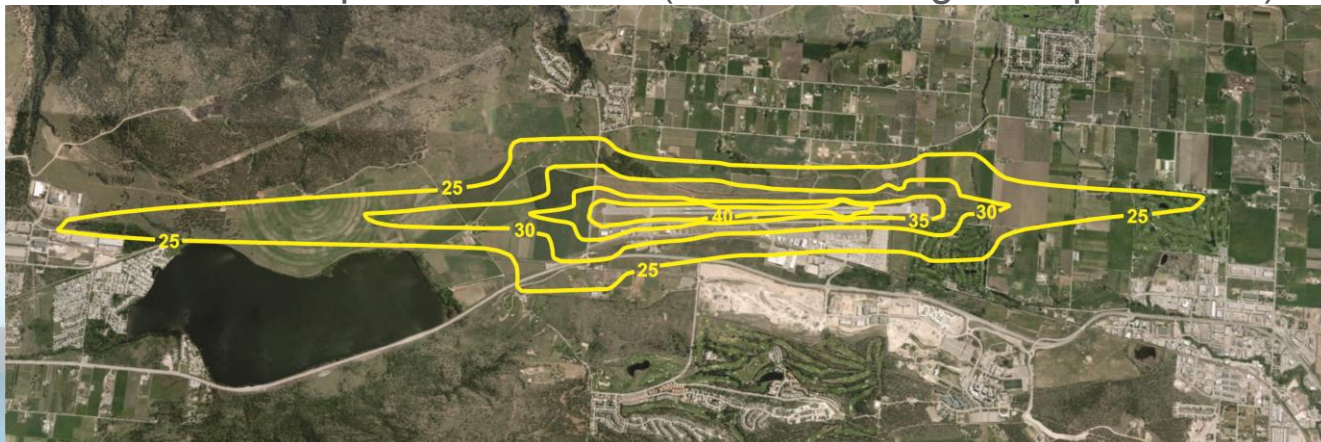
# Air Traffic Growth

## Noise Exposure – Preliminary Master Plan 2045

2025 Noise Exposure Forecast



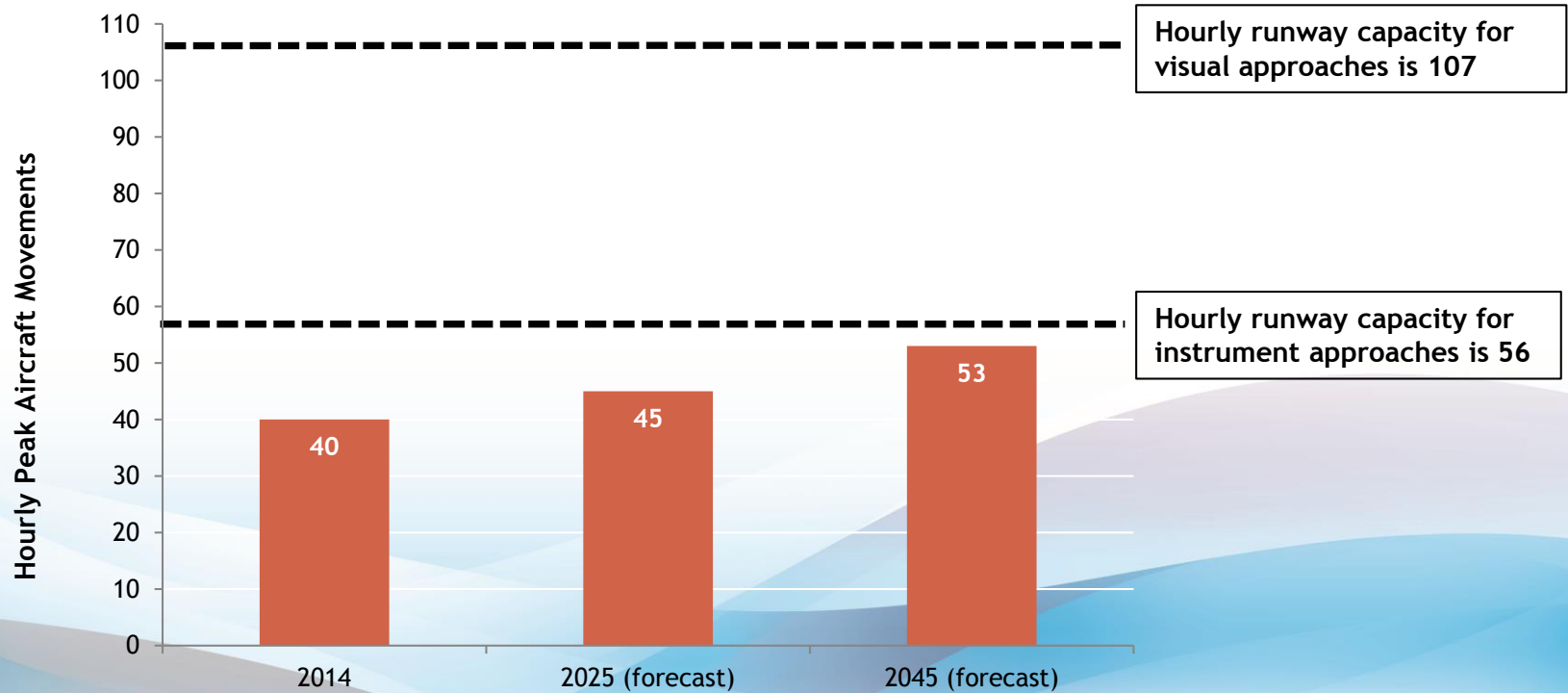
2045 Noise Exposure Forecast (Current zoning to be preserved)



# Airport Infrastructure

## Airside Capacity (e.g. Runways)

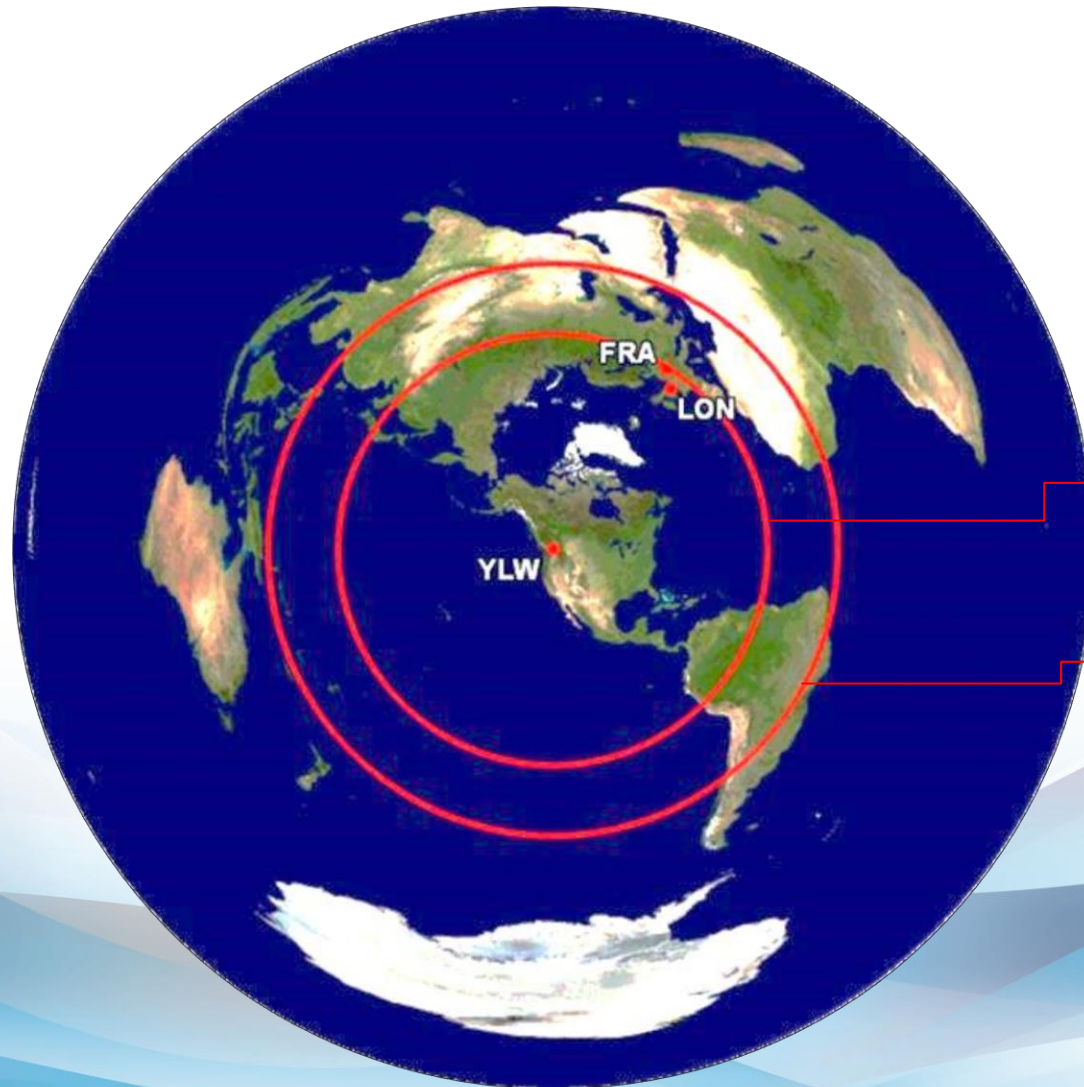
YLW's existing runway capacity accommodates future demand



# Airport Infrastructure

## Runway Length

- Current runway length is sufficient for B767-300ER aircraft to fly non-stop to London and Frankfurt with full passenger load



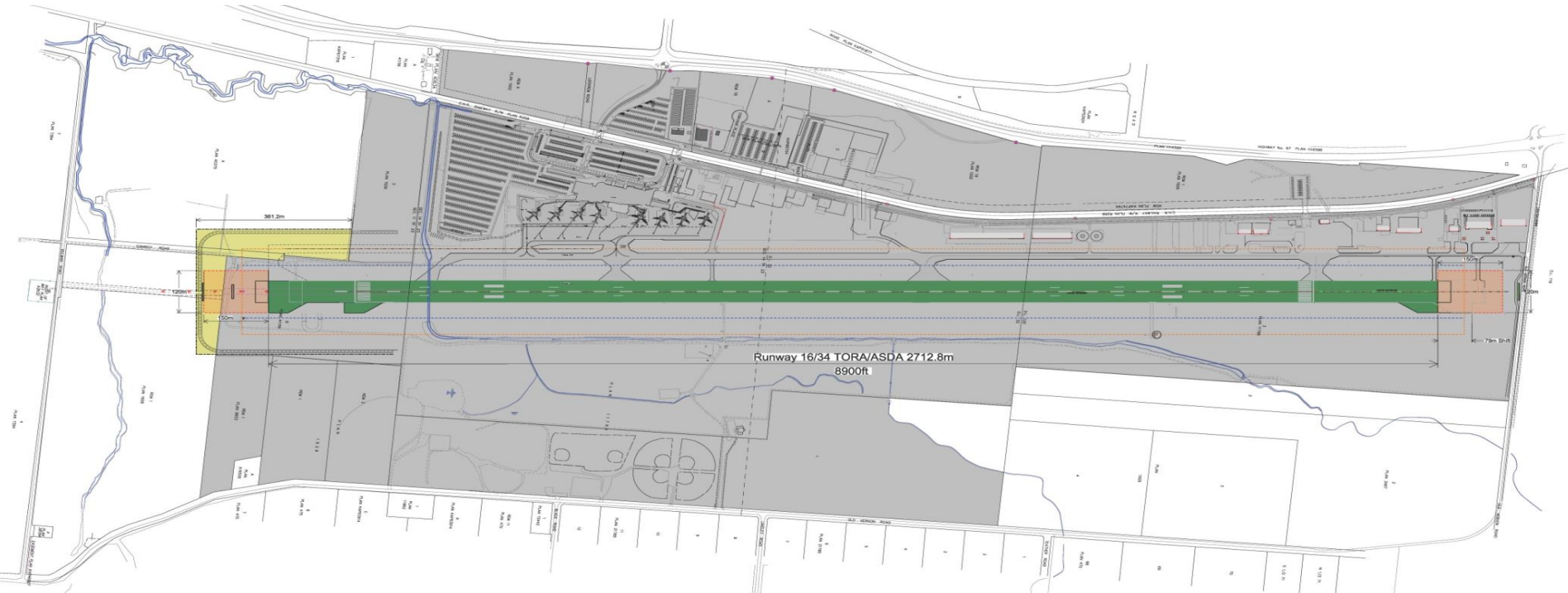
B767-300ER  
4300 nm

B787-8HI  
5700 nm



## New Aerodrome Regulation Changes

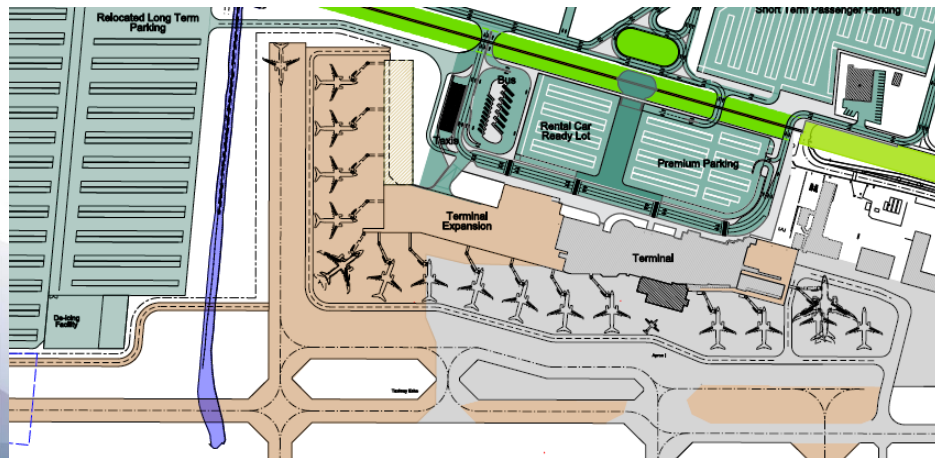
- TP 312 5<sup>th</sup> Edition came into effect September 2015
- New regs impact zoning for clearances under and around approach surfaces
- Runway End Safety Areas (RESA) will be required



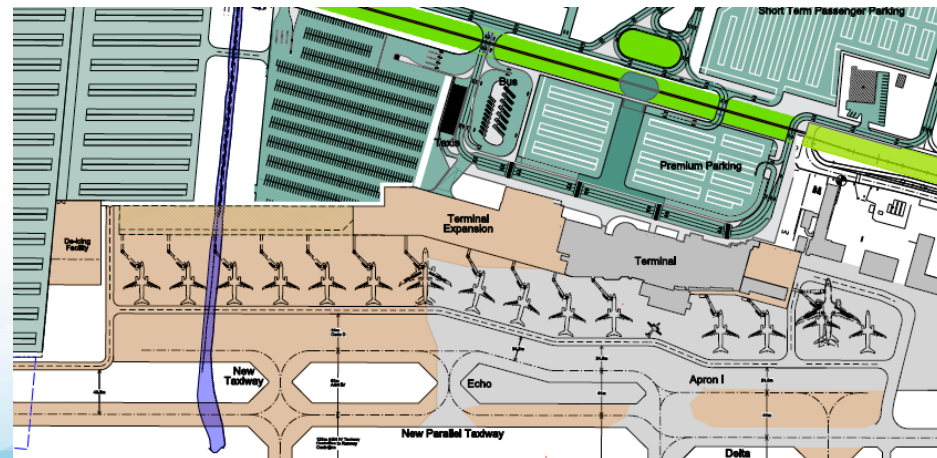
# Airport Infrastructure

## Apron and Aircraft Parking

- One to two terminal gates required by 2035
- Five new remote parking stands required by 2045
- Apron expansion options under review



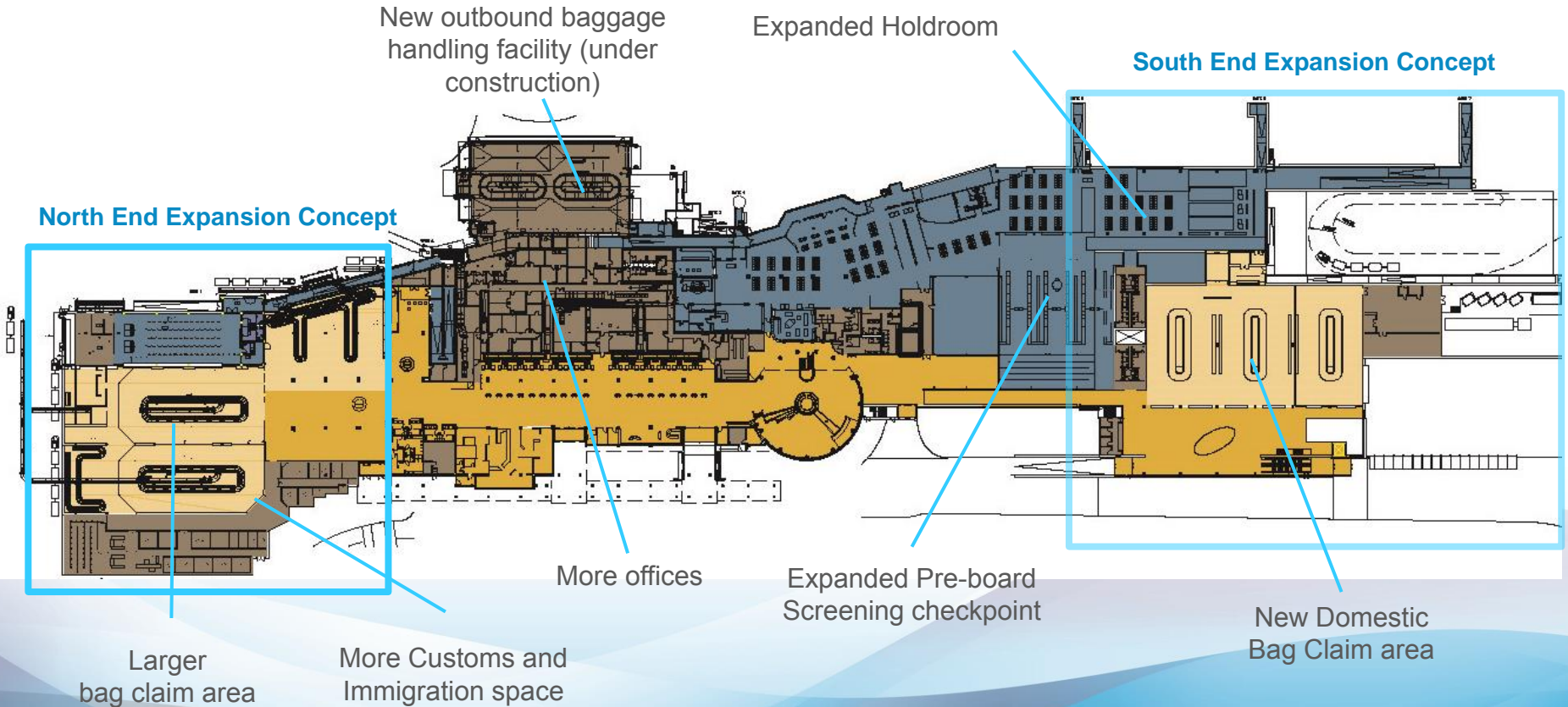
Scenario 1



Scenario 2

# Airport Infrastructure

## Air Terminal Building – Long-Term Expansion Program



Source: Dialog and SNC-Lavalin

\* Details of future layouts are at the discretion of the airport



## Air Terminal Building – Demand/Capacity

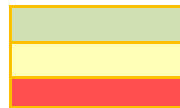
Proposed North Terminal Expansion Areas vs. Updated Functional Program Requirements (2015)

	Note	Existing, Incl. New Bag Make Up /HBS (m2)	Updated ATB Functional Program Requirements (m2)					
			2016	2020	2025	2030	2035	2045
<b>Enplaning</b>								
Departures Concourse Area (incl. check-in queue)		1,447	756	854	968	1,031	1,151	1,321
Check-in Counters (excl. queuing)		175	124	138	152	166	179	195
Preboard Screening Checkpoint		457	429	429	572	572	572	715
Holdroom Space (Usable)	1	793	969	1,105	1,274	1,375	1,544	1,770
Holdroom Space (Underutilized)	1	396						
Concessions, including storage		1,104	1,113	1,358	1,601	1,824	2,041	2,451
Bag Make-up/HBS		1,042	448	511	589	636	714	819
ATO Support/Airline Offices		648	612	712	819	928	1,346	1,553
<b>Deplaning</b>								
Domestic Bag Claim	2	595	691	1,012	1,012	1,012	1,012	1,012
International/Transborder Bag Claim	2	248	321	321	642	642	1,012	1,012
CBSA PIL, Secondary and Support		488	371	455	594	688	745	876
<b>All</b>								
Arrivals Lobby Landside		294	236	276	299	305	313	348
Car Rentals/Tour Operators		44	263	320	363	388	401	453
<b>Total All Spaces</b>		<b>7,731</b>	<b>6,333</b>	<b>7,491</b>	<b>8,885</b>	<b>9,567</b>	<b>11,030</b>	<b>12,525</b>

Demand less than 95% of Capacity

Demand within 95% and 110% of Capacity

Demand > 110% of Capacity



**Notes**

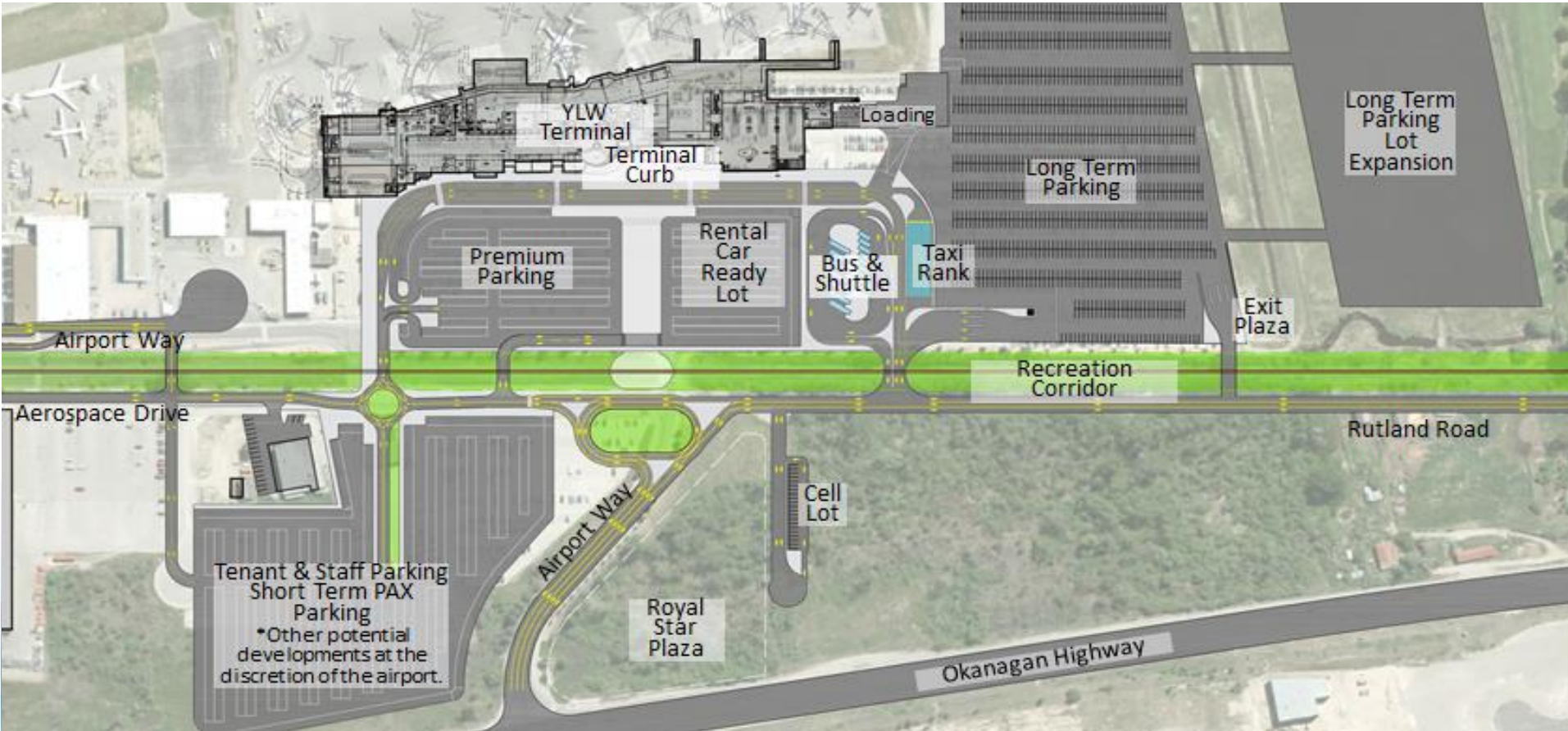
- Existing Sterile Holdroom area measures 1,189 m2, of which 396 m2 at the southern end is underutilized due to layout issues (and no access to boarding gates). This area is not included in the existing useable area.
- Assumes inbound bag ops area located outside (not included in terminal space requirements).

# Airport Infrastructure



## Car Parking and Roads

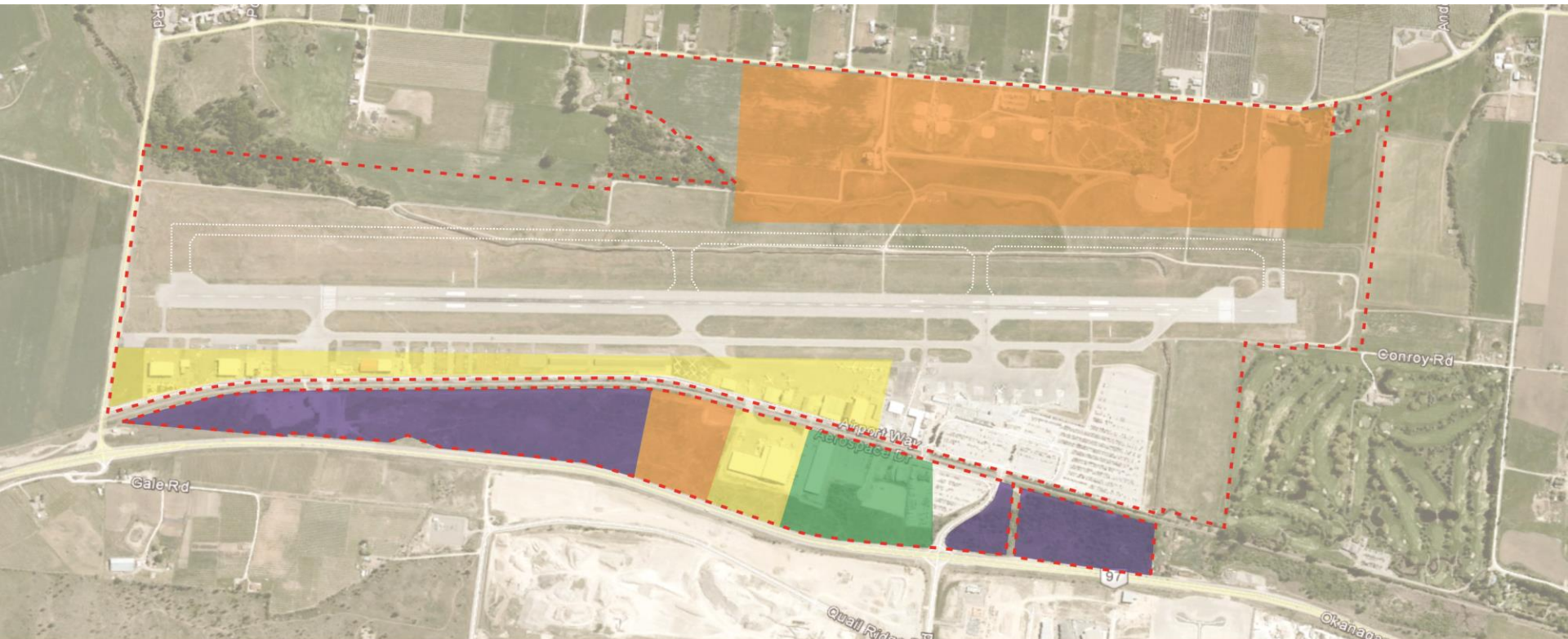
### Preferred Groundside and Access Parking Development Option



Source: Airbiz, 2015

# Land Considerations

## Commercial Land Development – On YLW Property



- Existing Groundside Commercial
- Future Groundside Commercial
- Airport Boundary

- Existing Airside Commercial
- Future Airside Commercial

# Land Considerations

## Potential Land Acquisition – Off YLW Property



-  Potential Land Acquisition Areas
-  Recently Acquired Land (Golf Course Still in Operation)
-  Airport Boundary

# HAVE YOUR SAY!

Your feedback is important!  
Please complete the survey or visit us online at:

<https://www.surveymonkey.com/r/MASTERPLAN2045YL>  
[W-1](#)

Thank you for your participation

