



Committee of the Whole

penticton.ca

Committee of the Whole

to be held at the City of Penticton Council Chambers
171 Main Street, Penticton, B.C.

To view the Council Meeting, visit www.penticton.ca

Tuesday, March 15, 2022

Recessed from the Regular Council Meeting at 1:00 p.m.

1. **Call Committee of the Whole to Order**
2. **Adoption of Agenda**
3. **Delegations:**
 - 3.1 Okanagan Ferry Concept 1-30
Andy Schwab, President, Okanagan Lake Boat Company Inc.
 - 3.2 269 Panther Squadron Air Cadets 31
Tom Iannella, Lt. Col retired, Chairman, Penticton Air Cadets
4. **Adjourn to Regular Meeting of Council**



Request to Appear as a Delegation

Preferred Council Meeting Date: MARCH 15, 2022

Second choice(s): APRIL 5, 2022

Subject matter: OKANAGAN FERRY - PENTICTON CANNING

Name of person(s) making presentation:

ANDY SCOTLAND

Address: _____

Phone: _____

Email: _____

Please provide details of your presentation or request of Council here: (or provide a detailed attachment)

We seek the support of Council for the "Okanagan Ferry" concept
and for a loan application submitted to the "Western Development
Tourism Lease Fund" by the delegate to assist with
project costs for the construction of public landing and the
re-start of operations.

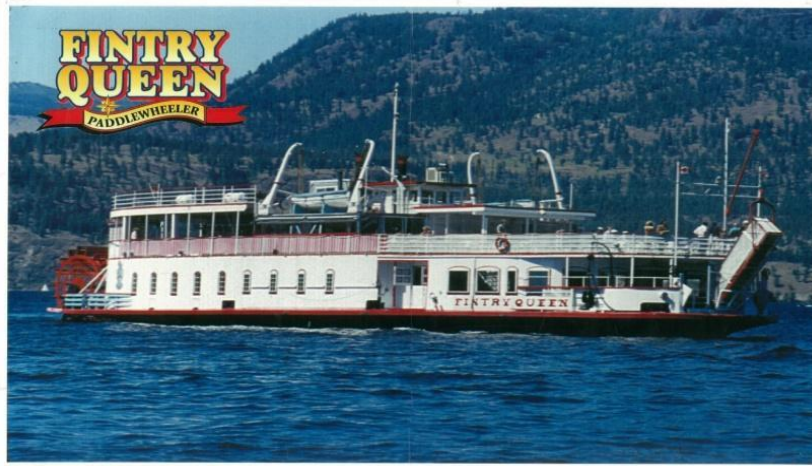
Please note:

- Due to COVID-19, meetings may be held electronically. Participation details will be confirmed with you prior to the meeting.
- This form and submissions will become part of the public record.
- The Mayor has the authority to determine if the subject matter warrants the delegation to appear before Council and may determine at which meeting.
- Please submit this completed form at your earliest convenience. Written Requests to Appear are to be received by the Corporate Officer, no later than noon Monday, one week prior to the Council meeting. Please include a copy of all materials that will be discussed.
- If you'd like to share a PowerPoint with Council, email it to the Corporate Officer by 9:30 a.m. Wednesday prior to the Council meeting to be included with the Agenda. If presenting via zoom, please be prepared to share your screen.
- **Delegations are limited to 5 minutes.**

Corporate Office
 Angie Collison, Corporate Officer
 171 Main Street, Penticton, B.C., V2A 5A9

Phone: 250-490-2410
 Fax: 250-490-2402
angie.collison@penticton.ca

The "M.V. Fintry Queen"



www.fintryqueen.ca

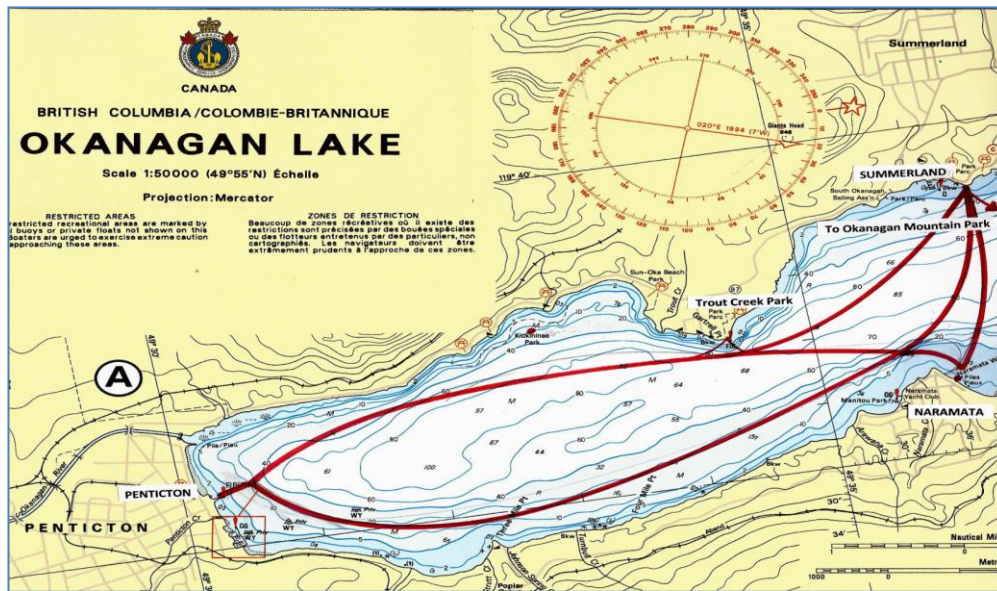
For information purposes only:

January, 2022

South Okanagan Ferry Service

The M.V. Fintry Queen is a 325 passenger ferry on Okanagan Lake in British Columbia, Canada, able to provide a transportation link connecting communities, parks, wineries and resorts.

The ship will restore historic transportation service for the benefit of residents and travelers, creating lifetime memories while showcasing the spectacular Okanagan landscape.



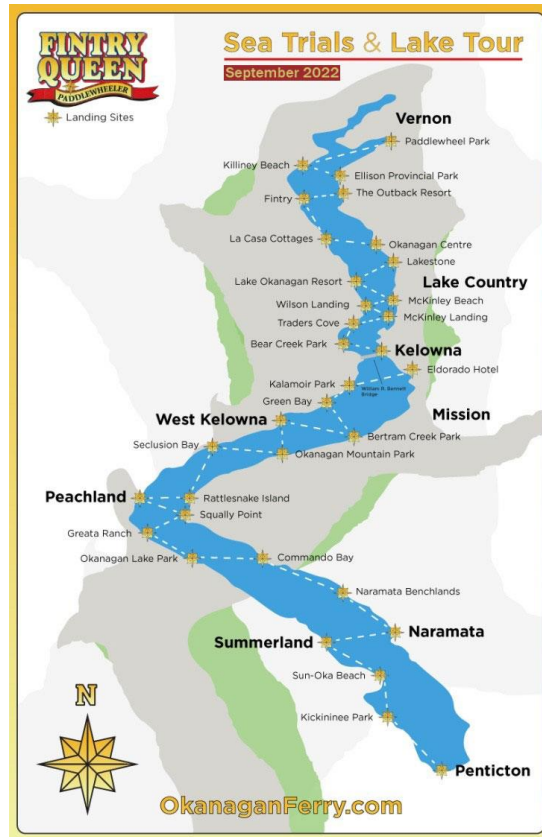
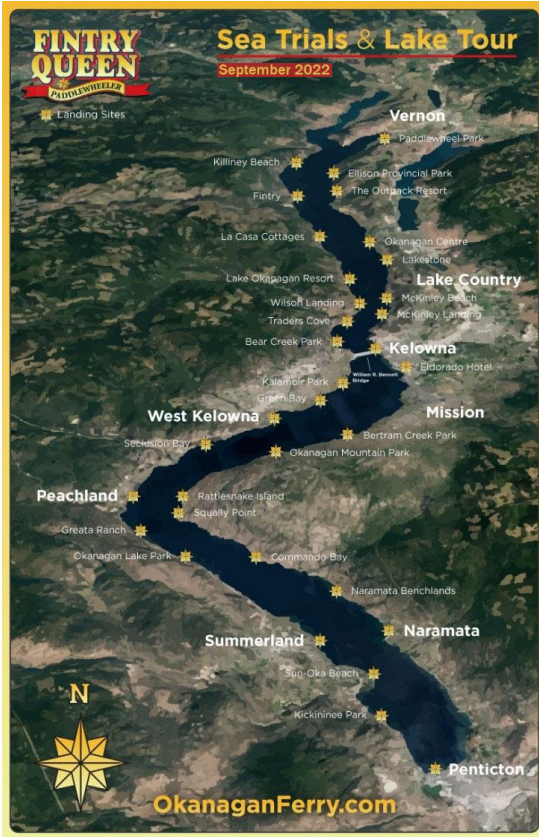
SAILING ROUTES & SCHEDULES

The chart illustrates how passengers could utilize the vessel on a typical 1-3 hour sightseeing circle tour of the South Okanagan. Travelers boarding from downtown Pentiction, could travel 1 hour north to Naramata to tour wineries and shops or access parks and the KVR, then re-board in the afternoon for the 15 minutes crossing to Summerland to continue their adventure and re-board once more in the evening for the return trip home. The ship would complete the circle every three hours, 3 or 4 times a day. Tour groups could cross the lake to gain access to parks, bike and hiking trails or be met by ground transportation providers. Cruise tickets would be valid for the entire day, providing unlimited usage and travel options.

Daily Departures

PENTICTON	9:00 AM	12:20 PM	3:40 PM	7:00 PM	10:00 PM	
NARAMATA	10:10 AM	11:10 AM	1:30 PM	2:30 PM	4:40 PM	8:10 PM
SUMMERLAND	10:40 AM	2:00PM	5:20 PM	8:40 PM		

A 3 year plan for the return to operations, began in the Summer of 2021, with work commencing on the hull in preparation for Transport Canada inspections and re-certification. A comprehensive work program will continue through the Summer of 2022 as the ship’s mechanical systems are readied in anticipation of a 10 day “Sea Trial” during early September. The purpose of the trial is to evaluate the ship’s performance over an extended period, while cruising the length of the 80 mile long lake, assessing more than 30 potential landing sites and hosting “Open House” events for dignitaries and the public to come aboard.



During the 3 year re-start, while maintenance and inspections are underway during 2022, the Company will initiate the permitting and approval process with municipal, regional and provincial authorities to obtain landing rights, with the goal of having initial facilities in place for the commencement of operations in the South Okanagan by the Summer of 2023.

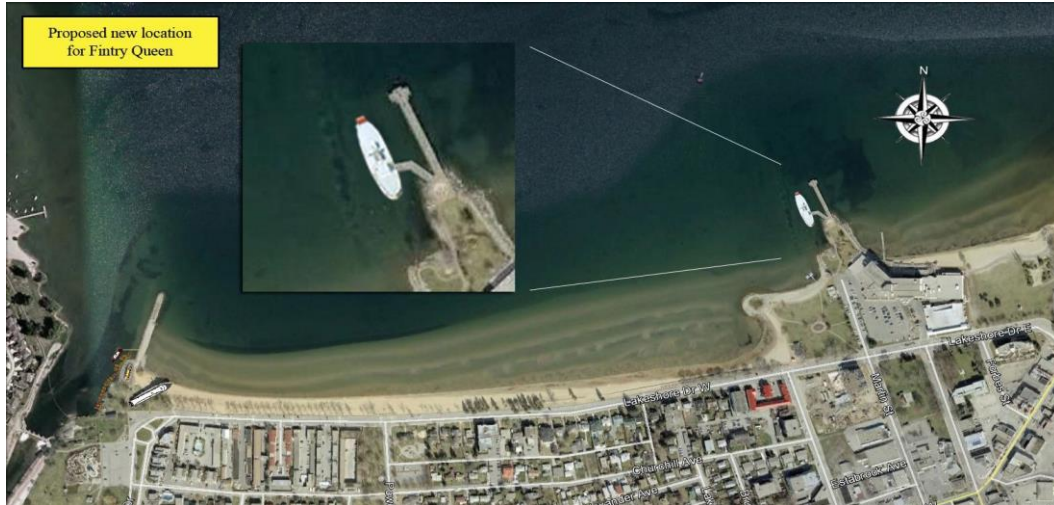
Year	Passengers	Departures	Operating Hrs
2022 – Sch 1	0	32	58
2023 – Sch 2	34,862	810	1,334
2024 – Sch 3	49,088	1570	1,536

Schedules will be developed based on market demand, special events and charters. Different operating schedules have been modeled to estimate passengers and costs based on landing facilities and seasonal patterns.

Schedule "1" reflects the “Sea Trial” period. Schedule “2” depicts the start of ferry service on May 24th, 2023 with weekend departures in June, leading to full operations in July through to the October Wine Festivals with 3-4 departures daily from Pentiction to either Naramata or Summerland. By the year 2024, Schedule “3” connects all three communities with continuous ferry service from May 24th – October 15th including Xmas Holiday cruises.

PORTS OF CALL

Penticton - In 2015, the City of Penticton entered into a 5 year lease agreement that included a draft Sub-License with the Province of BC, for a water lot lease just west of the Kiwanis Pier located at the foot of Main Street. Dock design, engineering, lot surveys and environmental permits were completed. However, funding for the project was not forthcoming and the lease then cancelled. We seek to renew these agreements.



Summerland & Naramata - In 2016, a resolution was supported by Summerland District Council to develop a business plan utilizing the existing Community Heritage Pier to connect that community with Penticton, Naramata and other points on the lake. Presentations were supported by the Naramata Advisory Planning Committee and the CNR Wharf Park Society for a landing in that community.



COMMUNITY BENEFITS

- **Improves public use and access to Okanagan Lake.**
- **Provides a transportation alternative.**
- **Enhances waterfront parks and increases safety.**
- **Generates jobs and supports the local economy.**
- **It's an outdoor family activity.**
- **Promotes tourism.**

The ship will serve as a resource for residents, a world class attraction and landmark that contributes to the Okanagan's vibrant appeal. Landing facilities will increase safety and services along waterfront boardwalks. The activity will be an economic generator, creating jobs and opportunities for others, becoming a value-added partner in the development of the transportation corridor.

BUSINESS STRENGTHS

- **Largest commercial passenger ferry on Okanagan Lake.**
- **Established business tradition for over 50 years.**
- **Proven history of transporting more than 30,000 passengers annually.**
- **Recognized Okanagan historical image.**
- **Regional tourist attraction with benefits for many businesses.**
- **Mobility by water provides the ability to access new markets and opportunities.**
- **Versatility of services for single persons to banquets, weddings & theme charters.**

THE MARKET

The population of the Thompson Okanagan region now surpasses 500,000 and continues to grow, characterized by an older demographic than the province as a whole, with 53% aged 45 or older compared to the provincial average of 46%. Half of BC residents and more than a third of other Canadians visiting stayed with family and friends, as did the majority of international visitors. The most popular activities are leisure focused, often water based, followed by visiting orchards and wineries. Respondents in past surveys have indicated their most positive image of the Okanagan Valley was the scenery, landscapes and the climate, while the biggest negative was the "traffic".

The regional Thompson Okanagan Tourist Association has developed a marketing segmentation program (called the "Explorer Quotient" or "EQ") which is based on demographic social values and behavior research to identify traveler types, to help the most desirable travelers find the right products. The three top regional "EQ" types are "Gentle Explorers", "Free Spirits" and the "Authentic Experienter" - all well suited groups for the "experience" that the Okanagan Ferry is able to offer.

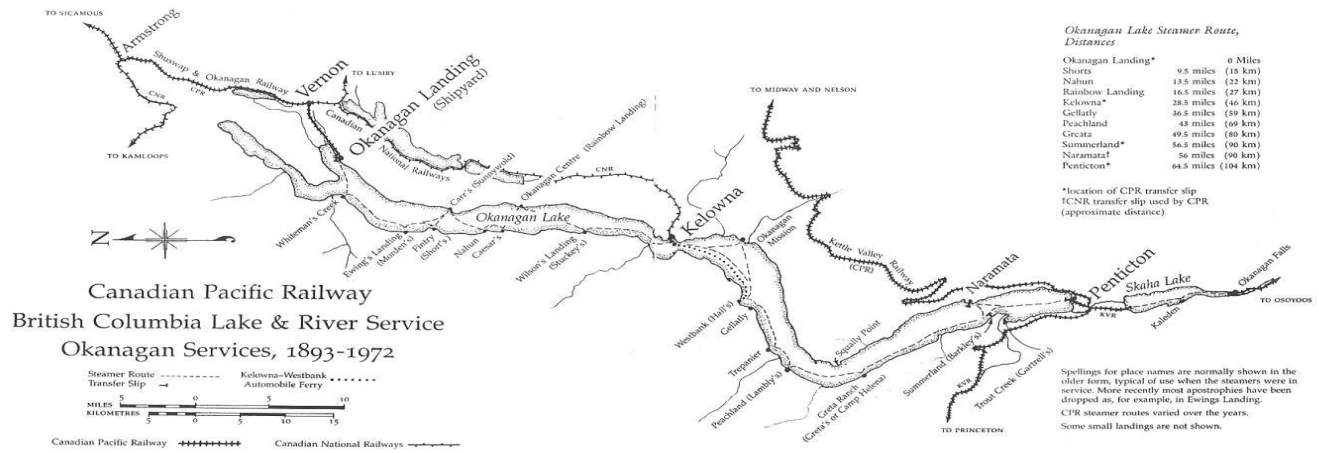
The Thompson Okanagan received 3,721,000 overnight visits in 2014 and generated over \$1.4 billion in related spending. Domestic overnight travelers accounted for 85% of visitation and stayed an average of 3.6 nights.

Perhaps a barometer of market potential, may be a direct comparison to the "Kettle Valley Railroad" attraction, located above the town of Summerland. Access to the KVR is only by car along backcountry roads and offers an historic steam engine train ride experience that takes an hour or so to complete, opens on the May Victoria Holiday Weekend, partial service until mid-June, then two scheduled runs 5 days a week until September's Labour Day Weekend, with extra runs for special holidays. In 2016, the KVR carried 30,500 passengers, in 2017 - 29,700 and in 2018 - 27,000. The lower numbers over the last two summers, may be attributed to the several weeks of forest fires. By comparison, the Fintry Queen, operating from Kelowna on a similar schedule more than 20 years ago, before the use of smart phones, carried 27,500 passengers in 1999 and 31,500 in 2000, which reflected just 22% of the ship's total passenger carrying capacity.



THE HISTORY

The history of navigation on Okanagan Lake dates back over a hundred years when the Canadian Pacific Railway commissioned the first ship, the "Aberdeen" to service the growing number of agricultural and mining settlements along the shores of the 80 mile long lake. The City of Penticton played a key role in this history and is home to the historic S.S. Sicamous, a restored paddlewheeler, on display with several tugboats from the era.



Originally named the "M.V. Lequime", the Fintry Queen was built in Vancouver in 1948 and shipped by rail in sections to Kelowna, where she became one of three car and passenger ferries crossing Okanagan Lake.



The first and smallest ferry, the "Pendozi", is now the Clubhouse for the Westbank Yacht Club. The third ferry, the "Lloyd Jones", was taken back to the coast by BC Ferries, where she continued to work for many years, before being sold in 1998 to the Dominican Republic.

In the 1960's, Arthur Bailey transformed the "Lequime" into the "Fintry" to transport travelers and tourists to the new development at Fintry Estates. The ship was rebuilt to reflect the sternwheeler tradition on Okanagan Lake.



A complete mechanical refit was undertaken between 2006 - 2008 to present Transport Canada standards. All the wiring, switches, electrical panels and fire control systems were replaced. The generators and main engines were rebuilt along with new stainless steel shafts and bronze propellers. Two fuel efficient turbo diesel engines power the vessel at an average cruising speed of 6-8 knots.



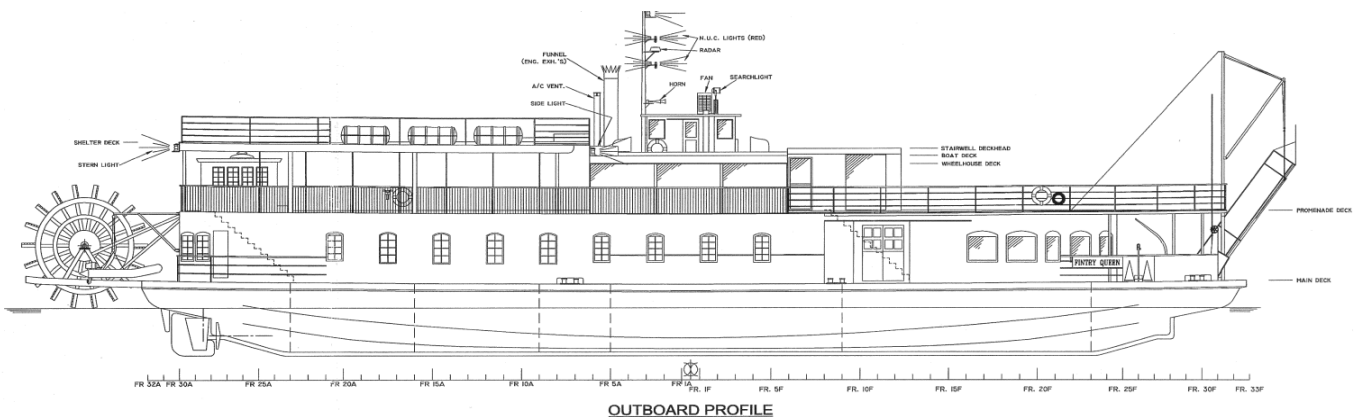
HISTORICAL PRECEDENTS

These photos of the M.V. Fintry were taken in the early 1970's and again in the 1990's. They illustrate that the ship has been a long time visitor to Penticton and operations in the South Okanagan.



SERVICES

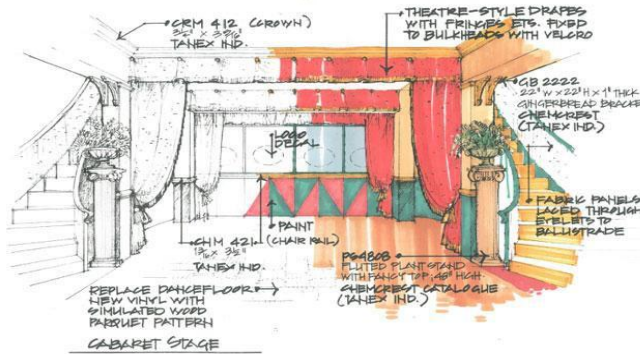
The ship contains over 9000 sq ft of deck space on 3 levels, with 5 distinct passenger areas and the ability to host multiple functions at the same time, while leaving common areas accessible for all aboard.



Formerly designed as a car ferry, the unique hull shape enables her to draw close to shore, to utilize the bow boarding ramp where there are no docking facilities. Passenger capacity could be increased beyond the present 325 limit with improved access and utilization of the Rear Upper Roof Deck.

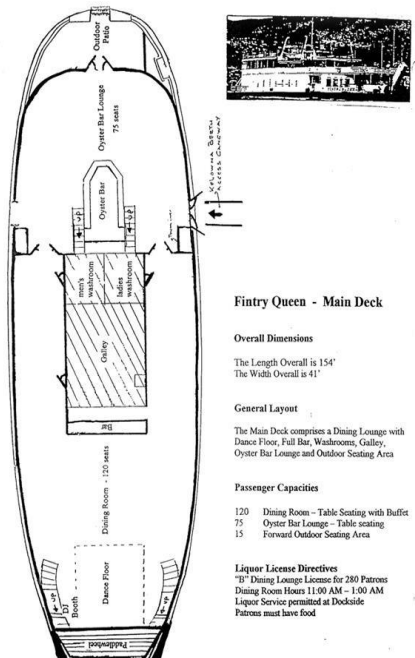


The enclosed Main Deck is both heated and air conditioned, featuring a commercial galley, an indoor Forward Lounge that seats 80 and a rear Main Dining Room with bar and dance floor for another 120 seated guests. On the Upper Promenade Deck, there is a covered outdoor seating area, sun deck, outdoor barbeque, snack bar and kids playroom. The Rear Upper Roof Deck offers panoramic views of the Valley. Future renovations envision a remodeling to reflect an earlier era.



The ship has previously hosted conferences, banquets and weddings for up to 325 passengers at one time, with a Food Primary liquor license for 280 patrons and a Liquor Primary license for 225 passengers, where minors were permitted.

Prior liquor permits listed the "Hours of Sale" from 11:00 AM - 1:00 AM (Sundays til Midnight). Dockside liquor service was permitted in accordance with local government approval or up to a maximum of one hour prior to a scheduled sailing. Liquor service is to conclude 30 minutes prior to docking.



Fintry Queen - Main Deck

Overall Dimensions
The Length Overall is 154'
The Width Overall is 41'

General Layout

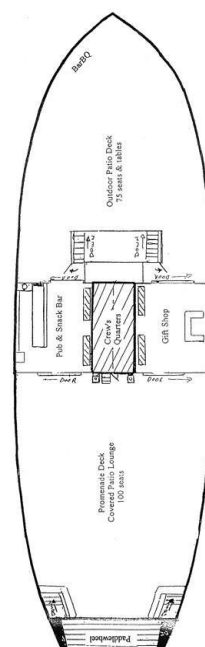
The Main Deck comprises a Dining Lounge with Dance Floor, Full Bar, Washrooms, Galley, Oyster Bar Lounge and Outdoor Seating Area

Passenger Capacities

- 120 Dining Room - Table Seating with Buffet
75 Oyster Bar Lounge - Table seating
15 Forward Outdoor Seating Area

Liquor License Directives

"B" Dining Lounge License for 280 Patrons
Dining Room Hours 11:00 AM - 1:00 AM
Liquor Service permitted at Dockside
Patrons must have food



Fintry Queen - Promenade Deck

Overall Dimensions

The Length Overall is 154'
The Width Overall is 41'

Total Passenger Capacities

- 308 Number of Passengers inclusive of 7 crew
336 Number of Passengers inclusive of 8 crew

General Layout

The Upper Deck comprises a Forward Outdoor Patio Deck, Gift Shop, Snack Bar & Pub with Draught Beer and Liquors, and a Semi-Enclosed Rear Patio Deck.

Promenade Deck

- 100 Bench Seats in Rear Patio Area
75 Seats & Tables on the Outdoor Deck

The rear Promenade Deck is weather protected by see-through blinds that can be drawn down for high winds or inclement weather conditions

Liquor License Directives

"A" Pub License for 225 Patrons
Dockside sales permitted one hr. prior to sailing
Meatloaf Permitted
Ticketed Cruises permitted w/o food.

PASSENGER FARES

The Okanagan Lake Ferry service will be competitively priced with existing tourist related attractions located in Penticton and the South Okanagan region.

Attraction	Adults	Seniors / Youth	Children under 12
Kettle Valley Railway	\$25	\$23/ \$20	\$16
Loco Landing Play Area	\$48 All day	\$10 per	\$10 per
Okanagan Cruises	\$25	\$25.00	\$12.50
Canal River Raft	\$12 return	\$12 return	\$12 return

For the ticket income projections used in revenue models, all fares incorporate an all day / multi-boarding pass, enabling passengers to disembark at any landing for several hours and then re-board for the return trip home.

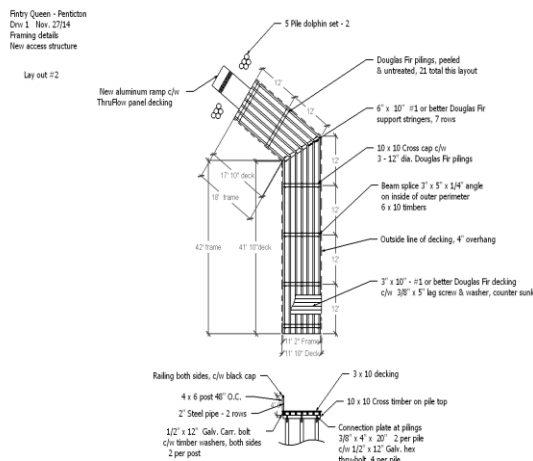
Cruise Tickets Prices	
Children under 3	Free
Children 12 and under	\$16.00
Seniors	\$23.00
Adults	\$25.00
Saturday Night (3 Hr. Cruise)	\$28.00

Avg Ticket Price	
Sch 1	
Sch 2	\$ 24.00
Sch 3	\$ 24.00

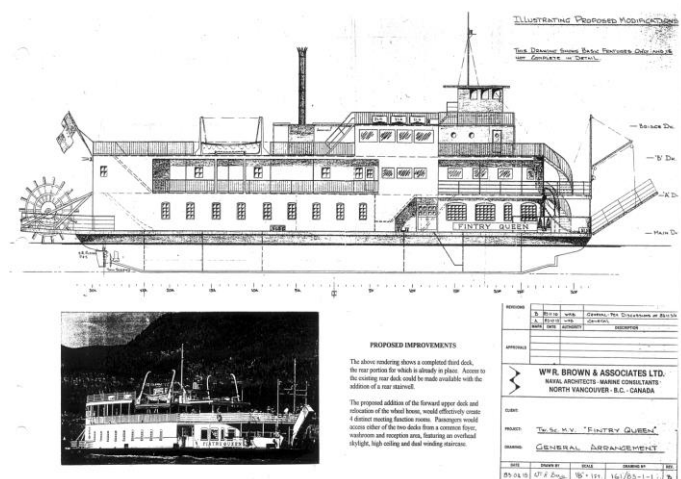


RISK

The vessel was last operated and certified by Transport Canada in 2008. Updated certificates and licenses are now required. Access to a landing facility for water, power and sewage is required for the start of operations. The plan includes the permitting and construction of a 60 ft passenger landing dock and moorage facility in Penticton and the development of additional landings in Naramata and Summerland, followed by parks and northern lakeshore communities over successive years. The schedule and scale of improvements could vary based on market demand and success of operations.



Penticton Landing Pier



Future rendering with the addition of a 3rd Deck

FINANCING

The Company has received an \$800,000. authorization as an "Eligible Business Corporation" under the BC Investment Program, with the ability to offer a 30% BC tax credit (maximum of \$60,000 for individuals, unlimited for corporations) to qualified investors. Recently, the Company applied for a \$500,000 loan from the Western Diversification – ‘Tourism Relief Fund’ to assist with the cost of developing the public use landings and dock infrastructure. We are open to investment from individuals and businesses within the community.

MANAGEMENT

Andrew Schwab - President

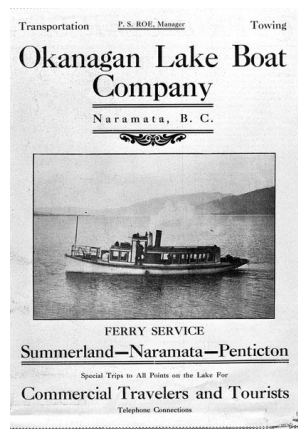
Andy has held numerous positions in the tourism and hospitality industries, filling a variety of restaurant and resort management roles, managing in excess of 100 seasonal employees and controlling large operating budgets. In 1988, he moved to the Okanagan as the Director of Sales & Marketing for Big White Ski Resort to develop the regional, international and destination tourism markets. Over a six-year period, he became familiar with regional demographics and laid the foundation for the development of long-term strategic alliances with suppliers and travel wholesalers.

In 1992, Andy acquired rights to the MV Pentowna, an historic 125 ft passenger ship that once plied Okanagan Lake for Canadian National Railways and from there, developed his interest to restore commercial passenger service. In 1999 and 2000, he leased the MV Fintry Queen and carried 30,000 passengers in a season. In 2009, he started Okanagan Marine Assist Ltd., a "24/7" marine towing and emergency service for commercial and recreational boaters. Andy holds a Master's Ltd. mariners license and related Transport Canada certifications.

CONSULTATION

We would like to express our thanks to individuals and organizations for their past contributions and support in preparing this summary:

- Economic Development Office - City of Penticton
- Downtown Penticton Association
- Penticton Chamber of Commerce
- Tourism Penticton
- Penticton Hospitality Association
- RDOS
- BC Parks
- Penticton Rotary Club



This poster was printed "circa 1912" and provided courtesy of the Penticton Museum. Today, the MV Fintry Queen is registered and titled to the "Okanagan Lake Boat Company Inc."

For Information: Contact Andy Schwab Email: info@fintryqueen.ca Cell/txt: 250-808-2628

FINTRY QUEEN

PADDLEWHEELER



“Creating lifetime memories for families and friends...”



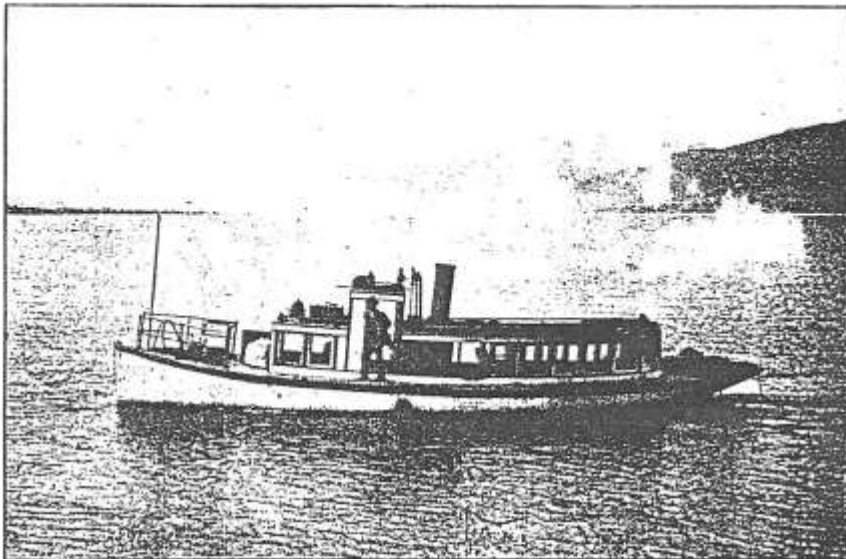
Transportation

P. S. ROE, Manager

Towing

Okanagan Lake Boat Company

Naramata, B. C.



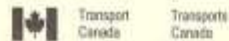
FERRY SERVICE

Summerland—Naramata—Penticton

Special Trips to All Points on the Lake For

Commercial Travelers and Tourists

Telephone Connections



-13-

CERTIFICATE OF REGISTRY CERTIFICAT D'IMMATRICULATION

Vessel name - Nom du bâtiment: FINTRY QUEEN	Official number - N° matricule: 177983	Port of registry - Port d'immatriculation: VANCOUVER	IMO - CMI #: 7964158
Gross tonnage - Jauge brute: 560	Net/Registe tonnage - Jauge nette/registre: 522	Length - Longueur: 38.96 m	Breadth - Largeur: 12.62 m
		Depth - Creux: 2.32 m	
All up weight (Air cushion vehicles) -		Model designation (Air cushion vehicles) -	



OPERATION FAILURE TO REPORT ANY CHANGES, INCLUDING A CHANGE OF ADDRESS TO THE PORT OF REGISTRY, MAY RESULT IN THE SUSPENSION/CANCELLATION OF THE REGISTRATION.

SI MODIFIÉ, CE CERTIFICAT N'EST PAS VALIDE. DURANT L'EXPLOITATION DU BÂTIMENT, LE CERTIFICAT D'IMMATRICULATION DOIT TOUJOURS RESTER À BORD. À DÉFAUT DE RAPPORTER DES CHANGEMENTS, Y COMPRIS UN CHANGEMENT D'ADRESSE AU PORT D'IMMATRICULATION, IL PEUT Y AVOIR COMME CONSÉQUENCE LA SUSPENSION/RÉVOCATION DE L'IMMATRICULATION.

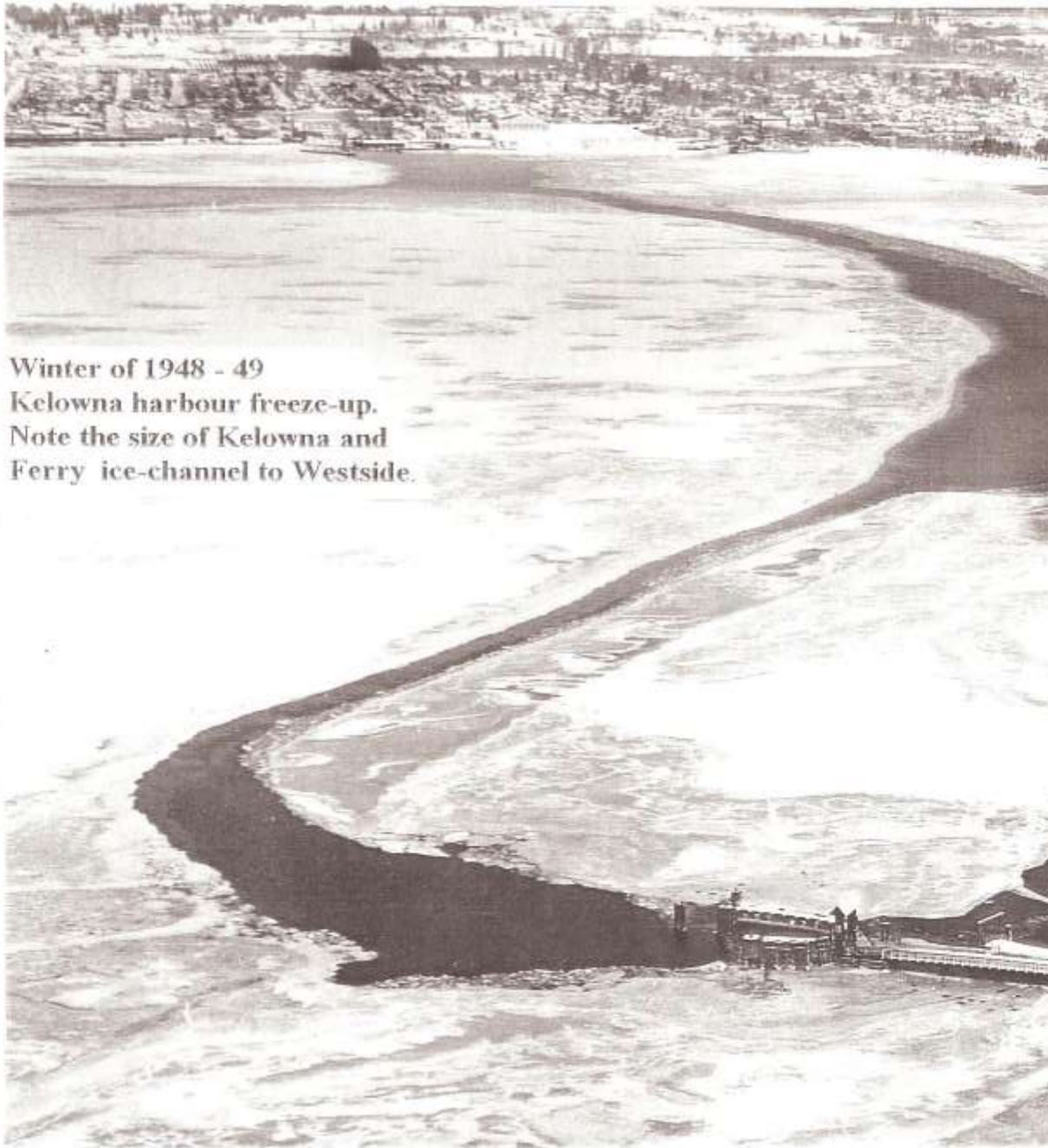
Issue date - Date d'émission: JANUARY 31, 2013	This certificate expires at the end of - Ce certificat expire à la fin de: JANUARY, 2016
Issued at - Émis à: Vessel Registration/Immatriculation des bâtiments Marine Safety/Sécurité maritime Transport Canada/Transports Canada OTTAWA	Signature: (Chief Registrar - Registrars en chef) (CSA 2501 - LMMC 2001 s.42)

84-0189 (07/11-04)

Page 1 of 2

Canada





Winter of 1948 - 49
Kelowna harbour freeze-up.
Note the size of Kelowna and
Ferry ice-channel to Westside.





\$500. REWARD
 FOR AN AUTHENTIC PICTURE OF "OGOPOGO"
TAKEN FROM THE

M.V. FINTRY



**Okanagan Lake
 CRUISES**

Daily Schedule		Rate	1965
A.M.	1st DEPARTING 10:00 a.m.	\$1.50	.75
P.M.	1st DEPARTING 2:00 p.m.	\$3.00	\$1.00
	2nd DEPARTING 4:00 p.m.	\$4.00	\$2.50
	3rd DEPARTING 6:00 p.m.		
	4th DEPARTING 7:00 p.m.		

Dance Special Every Friday and Saturday Night to Fintry

COMPLETE PACKAGE
 CRUISE - DANCE AND RETIERS **\$4.50** Per Person

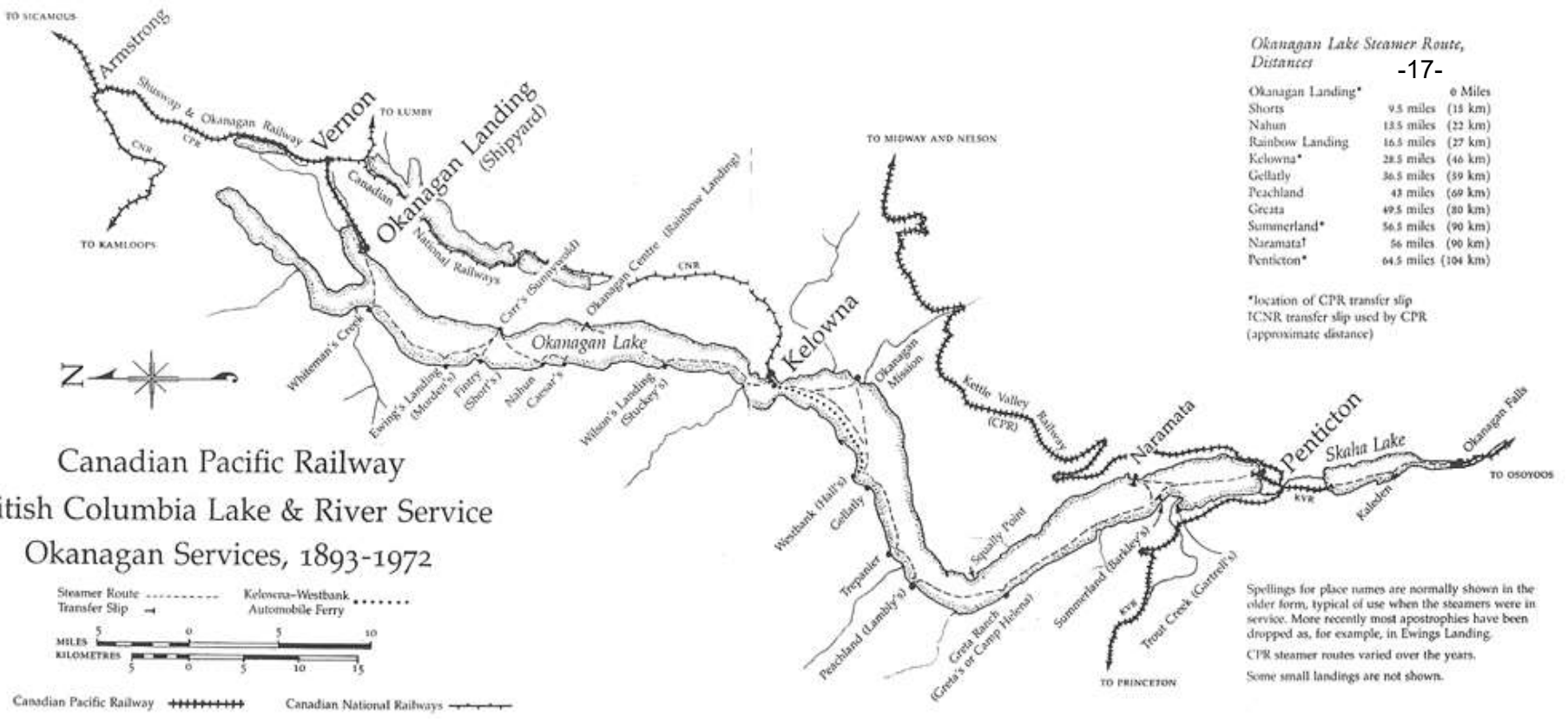
All the Fun of an Ocean Cruise - Deck Games - Entertainment - Music - Sing-A-Longs - Banquet. View the Historical Shoreline of the Beautiful Okanagan. See Points of Interest such as Indian Burial Grounds - Trappers Cabins - Munster and Squaw Island and many other Attractions.

PRICES AND SCHEDULES SUBJECT TO CHANGE WITHOUT NOTICE

CHARTER TOURS AVAILABLE

FOR INFORMATION CALL:
FINTRY MARINA LTD.
 763-5120

The first voyage to Fintry Provincial Park in 1965.



Westside Weekly Photos by Ted Jacob

The Fintry Queen made its first visit to Peachland last week, bottom left, chartered by the church group World Church of God which held a convention in Penticton for 2,600 of its followers. Peachland was used for the dock this year because Penticton facilities will no longer accommodate the ship. Top left, Fintry Queen Captain Lorne Musclow looks out from deck and, at right Peachland resident Harry St. Clair watches from wharf as the Queen sails by.

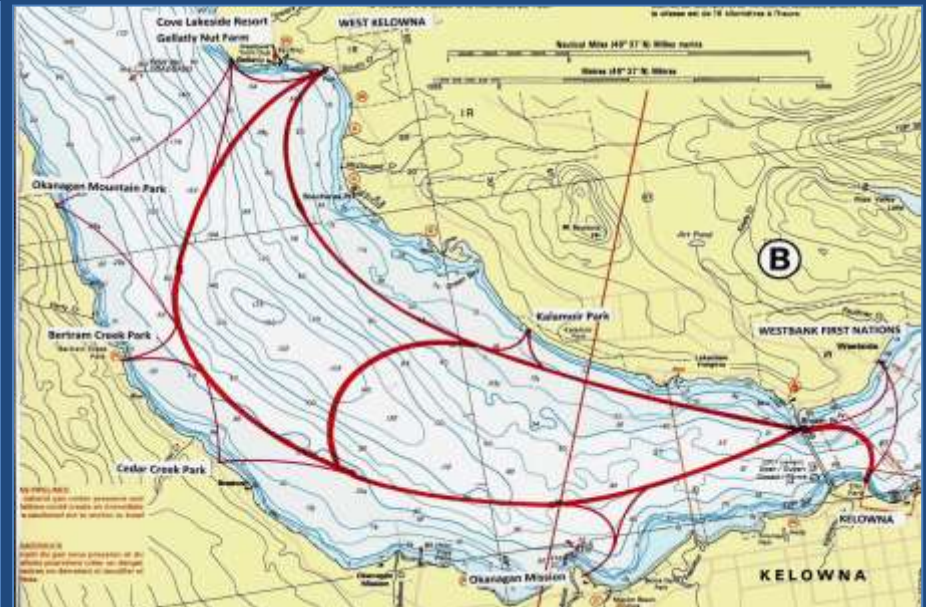
Sea Trials & Lake Tour - September 2022



Okanagan Lake Ferry Service

South Okanagan Routes

Central Okanagan Routes



Penticton – Naramata – Summerland

Kelowna – West Kelowna

PENTICTON	9:00 AM	12:20 PM	3:40 PM	7:00 PM	10:00 PM	
NARAMATA	10:10 AM	11:10 AM	1:30 PM	2:30 PM	4:40 PM	8:10 PM
SUMMERLAND	10:40 AM	2:00PM	5:20 PM	8:40 PM		

KELOWNA	9:00 AM	12:30 PM	6:00 PM	9:00 PM
WEST KELOWNA	7:00 AM	10:45 AM	2:15 PM	7:45 PM

Two sailing routes identified, with the ferry circling around several times daily. Additional docks and landings sites to be added over time, stopping on demand.

South Okanagan Landings



Summerland Heritage Pier



Naramata CNR Wharf Park

Cruise Year 2024 - Full Operation May 28th Victoria Day Weekend to Labour Day, wknds to Oct Wine Festival, Xmas Season.
 Three landings - Penticton / Naramata / Summerland

Open for dinner dockside 1 Hr prior to departure

MON	Destination	Operating Hrs.	Avg Passengers / Cruise										Estimated Passenger Count												
			MAY	JUNE	JULY	AUG	SEPT	OCT	DEC	TOTAL	MAY	JUNE	JULY	AUG	SEPT	OCT	DEC	MAY	JUNE	JULY	AUG	SEPT	OCT	DEC	TOTAL
	PEN - NAR	8:00 - 9:00 AM	1	4	5	4	1	1	0	16	20	30	30	40	40	30	0	20	120	150	160	40	30	0	520
	NAR - SUM	9:10 - 9:40 AM	1	4	5	4	1	1	0	16	20	10	15	20	10	30	0	20	40	75	80	10	30	0	255
	SUM - NAR	9:50 - 10:20 AM	1	4	5	4	1	1	0	16	20	25	60	60	40	20	0	20	100	300	240	40	20	0	720
	NAR - PEN	10:30 - 11:30 AM	1	4	5	4	1	1	0	16	20	15	25	25	15	40	0	20	60	125	100	15	40	0	360
	PEN - NAR	12:00 - 1:00 PM	1	4	5	4	1	1	1	17	100	80	125	120	100	50	100	100	320	625	480	100	50	100	1,775
	NAR - SUM	1:10 - 1:40 PM	1	4	5	4	1	1	1	17	10	5	50	30	20	15	0	10	20	250	120	20	15	0	435
	SUM - NAR	2:00 - 2:30 PM	1	4	5	4	1	1	1	17	20	12	50	20	20	15	0	20	48	250	80	20	15	0	433
	NAR - PEN	2:40 - 3:40 PM	1	4	5	4	1	1	1	17	10	6	30	40	30	20	0	10	24	150	160	30	20	0	394
	PEN - NAR	6:00 - 7:00 PM	1	4	5	4	1	1	1	17	100	50	100	150	100	80	100	100	200	500	600	100	80	100	1,680
	NAR - SUM	7:10 - 7:40 PM	1	4	5	4	1	1	1	17	20	10	20	20	10	10	0	20	40	100	80	10	10	0	260
	SUM - NAR	7:50 - 8:20 PM	1	4	5	4	1	1	1	17	10	15	20	30	10	10	0	10	60	100	120	10	10	0	310
	NAR - PEN	8:30 - 9:30 PM	1	4	5	4	1	1	1	17	10	10	10	10	5	5	0	10	40	50	40	5	5	0	150
	PEN - NAR	8:00 - 9:00 AM	1	4	5	4	0	1	0	15	20	30	30	40	40	30	0	20	120	150	160	0	30	0	480
	NAR - SUM	9:10 - 9:40 AM	1	4	5	4	0	1	0	15	20	10	15	20	10	30	0	20	40	75	80	0	30	0	245
	SUM - NAR	9:50 - 10:20 AM	1	4	5	4	0	1	2	17	20	25	60	60	40	20	0	20	100	300	240	0	20	0	680
	NAR - PEN	10:30 - 11:30 AM	1	4	5	4	0	1	2	17	20	15	25	25	15	40	0	20	60	125	100	0	40	0	345
	PEN - NAR	12:00 - 1:00 PM	1	4	5	4	0	1	2	17	100	80	125	120	100	50	100	100	320	625	480	0	50	200	1,775
	NAR - SUM	1:10 - 1:40 PM	1	4	5	4	0	1	2	17	10	50	50	40	20	20	0	10	200	250	160	0	20	0	640
	SUM - NAR	2:00 - 2:30 PM	1	4	5	4	0	1	2	17	20	12	50	20	20	15	0	20	48	250	80	0	15	0	413
	NAR - PEN	2:40 - 3:40 PM	1	4	5	4	0	1	2	17	10	6	30	40	30	20	0	10	24	150	160	0	20	0	364
	PEN - NAR	6:00 - 7:00 PM	1	4	5	4	0	1	2	17	100	50	100	150	100	80	150	100	200	500	600	0	80	300	1,780
	NAR - SUM	7:10 - 7:40 PM	1	4	5	4	0	1	2	17	20	10	20	20	10	10	0	20	40	100	80	0	10	0	250
	SUM - NAR	7:50 - 8:20 PM	1	4	5	4	0	1	2	17	10	15	20	30	10	10	0	10	60	100	120	0	10	0	300
	NAR - PEN	8:30 - 9:30 PM	1	4	5	4	0	1	2	17	10	10	10	10	5	5	0	10	40	50	40	0	5	0	145
	PEN - NAR	8:00 - 9:00 AM	1	4	5	4	0	1	0	15	20	30	30	40	40	30	0	20	120	150	0	0	30	0	320
	NAR - SUM	9:10 - 9:40 AM	1	4	5	4	0	1	0	15	20	10	15	20	10	30	0	20	40	75	0	0	30	0	165
	SUM - NAR	9:50 - 10:20 AM	1	4	5	4	0	1	0	15	20	25	60	60	40	20	0	20	100	300	0	0	20	0	440
	NAR - PEN	10:30 - 11:30 AM	1	4	5	4	0	1	0	15	20	15	25	25	15	40	0	20	60	125	0	0	40	0	245
	PEN - NAR	12:00 - 1:00 PM	1	4	5	4	0	1	1	16	100	80	125	120	100	50	100	100	320	625	480	0	50	100	1,675
	NAR - SUM	1:10 - 1:40 PM	1	4	5	4	0	1	1	16	10	50	50	40	20	20	0	10	200	250	160	0	20	0	640
	SUM - NAR	2:00 - 2:30 PM	1	4	5	4	0	1	1	16	20	12	50	20	20	15	0	20	48	250	80	0	15	0	413
	NAR - PEN	2:40 - 3:40 PM	1	4	5	4	0	1	1	16	10	6	30	40	30	20	0	10	24	150	160	0	20	0	364
	PEN - NAR	6:00 - 7:00 PM	1	4	5	4	0	1	1	16	100	50	100	150	100	80	150	100	200	500	600	0	80	150	1,630
	NAR - SUM	7:10 - 7:40 PM	1	4	5	4	0	1	1	16	20	10	20	20	10	10	0	20	40	100	80	0	10	0	250
	SUM - NAR	7:50 - 8:20 PM	1	4	5	4	0	1	1	16	10	15	20	30	10	10	0	10	60	100	120	0	10	0	300
	NAR - PEN	8:30 - 9:30 PM	1	4	5	4	0	1	1	16	10	10	10	10	5	5	0	10	40	50	40	0	5	0	145
	PEN - NAR	8:00 - 9:00 AM	2	4	4	5	0	1	0	16	20	30	30	40	40	30	0	40	120	120	200	0	30	0	510
	NAR - SUM	9:10 - 9:40 AM	2	4	4	5	0	1	0	16	20	10	15	20	10	30	0	40	40	60	100	0	30	0	270
	SUM - NAR	9:50 - 10:20 AM	2	4	4	5	0	1	0	16	20	25	60	60	40	20	0	40	100	240	300	0	20	0	700
	NAR - PEN	10:30 - 11:30 AM	2	4	4	5	0	1	0	16	20	15	25	25	15	40	0	40	60	100	125	0	40	0	365
	PEN - NAR	12:00 - 1:00 PM	2	4	4	5	0	1	1	17	100	80	125	120	100	50	100	200	320	500	600	0	50	100	1,770
	NAR - SUM	1:10 - 1:40 PM	2	4	4	5	0	1	1	17	10	50	50	40	20	20	0	20	200	200	200	0	20	0	640
	SUM - NAR	2:00 - 2:30 PM	2	4	4	5	0	1	1	17	20	12	50	20	20	15	0	40	48	200	100	0	15	0	403
	NAR - PEN	2:40 - 3:40 PM	2	4	4	5	0	1	1	17	10	6	30	40	30	20	0	20	24	120	200	0	20	0	384
	PEN - NAR	6:00 - 7:00 PM	2	4	4	5	0	1	1	17	100	50	100	150	100	80	0	200	200	400	750	0	80	0	1,630
	NAR - SUM	7:10 - 7:40 PM	2	4	4	5	0	1	1	17	20	10	20	20	10	10	150	40	40	80	100	0	10	150	420
	SUM - NAR	7:50 - 8:20 PM	2	4	4	5	0	1	1	17	10	15	20	30	10	10	0	20	60	80	150	0	10	0	320
	NAR - PEN	8:30 - 9:30 PM	2	4	4	5	0	1	1	17	10	10	10	10	5	5	0	20	40	40	50	0	5	0	155

Destination	Operating Hrs.	MAY	JUNE	JULY	AUG	SEPT	OCT	DEC	TOTAL	MAY	JUNE	JULY	AUG	SEPT	OCT	DEC	MAY	JUNE	JULY	AUG	SEPT	OCT	DEC	TOTAL		
FRI	PEN - NAR	8:00 - 9:00 AM	2	4	4	5	4	2	0	21	20	30	30	40	40	30	0	40	120	120	200	160	-22	60	0	700
	NAR - SUM	9:10 - 9:40 AM	2	4	4	5	4	2	0	21	20	10	15	20	10	30	0	40	40	60	100	40	60	0	340	
	SUM - NAR	9:50 - 10: 20 AM	2	4	4	5	4	2	0	21	20	25	60	60	40	20	0	40	100	240	300	160	40	0	880	
	NAR - PEN	10:30 - 11:30 AM	2	4	4	5	4	2	0	21	20	15	25	15	40	0	40	60	100	125	60	80	0	0	465	
	PEN - NAR	12:00 - 1:00 PM	2	4	4	5	4	2	1	22	100	80	125	120	100	50	100	200	320	500	600	400	100	100	2,220	
	NAR - SUM	1:10 - 1:40 PM	2	4	4	5	4	2	1	22	10	20	40	40	20	20	0	20	80	160	200	80	40	0	580	
	SUM - NAR	2:00 - 2:30 PM	2	4	4	5	4	2	1	22	35	35	50	50	65	20	0	70	140	200	250	260	40	0	960	
	NAR - PEN	2:40 - 3:40 PM	2	4	4	5	4	2	1	22	20	12	50	20	20	15	0	40	48	200	100	80	30	0	498	
	PEN - NAR	6:00 - 7:00 PM	2	4	4	5	4	2	1	22	100	50	100	150	100	80	150	200	200	400	750	400	160	150	2,260	
	NAR - SUM	7:10 - 7:40 PM	2	4	4	5	4	2	1	22	20	10	20	20	10	10	0	40	40	80	100	40	20	0	320	
	SUM - NAR	7:50 - 8:20 PM	2	4	4	5	4	2	1	22	10	15	20	30	10	10	0	20	60	80	150	40	20	0	370	
	NAR - PEN	8:30 - 9:30 PM	2	4	4	5	4	2	1	22	10	10	10	10	5	5	0	20	40	40	50	20	10	0	180	

SAT	PEN - NAR	8:00 - 9:00 AM	1	5	4	5	5	2	0	22	25	30	30	30	30	40	0	25	150	120	150	150	80	0	675
	NAR - SUM	9:10 - 9:40 AM	1	5	4	5	5	2	0	22	60	40	75	45	45	50	0	60	200	300	225	225	100	0	1,110
	SUM - NAR	9:50 - 10: 20 AM	1	5	4	5	5	2	0	22	60	60	80	100	100	50	0	60	300	320	500	500	100	0	1,780
	NAR - PEN	10:30 - 11:30 AM	1	5	4	5	5	2	0	22	60	100	165	225	160	65	0	60	500	660	1125	800	130	0	3,275
	PEN - NAR	12:00 - 1:00 PM	1	5	4	5	5	2	1	23	85	100	165	225	160	120	100	85	500	660	1125	800	240	100	3,510
	NAR - SUM	1:10 - 1:40 PM	1	5	4	5	5	2	1	23	10	20	40	40	20	20	50	10	100	160	200	100	40	50	660
	SUM - NAR	2:00 - 2:30 PM	1	5	4	5	5	2	1	23	35	35	50	50	65	20	0	35	175	200	250	325	40	0	1,025
	NAR - PEN	2:40 - 3:40 PM	1	5	4	5	5	2	1	23	20	12	50	20	20	15	0	20	60	200	100	100	30	0	510
	PEN - NAR	6:00 - 7:00 PM	1	5	4	5	5	2	1	23	100	50	100	150	100	80	150	100	250	400	750	500	160	150	2,310
	NAR - SUM	7:10 - 7:40 PM	1	5	4	5	5	2	1	23	20	10	20	20	10	10	0	20	50	80	100	50	20	0	320
	SUM - NAR	7:50 - 8:20 PM	1	5	4	5	5	2	1	23	10	15	20	30	10	10	0	10	75	80	150	50	20	0	385
	NAR - PEN	8:30 - 9:30 PM	1	5	4	5	5	2	1	23	10	10	10	10	5	5	0	10	50	40	50	25	10	0	185

SUN	PEN - NAR	8:00 - 9:00 AM	1	5	4	4	4	2	0	20	20	30	30	15	15	30	0	20	150	120	60	60	60	0	470
	NAR - SUM	9:10 - 9:40 AM	1	5	4	4	4	2	0	20	60	50	75	45	45	25	0	60	250	300	180	180	50	0	1,020
	SUM - NAR	9:50 - 10: 20 AM	1	5	4	4	4	2	1	21	25	40	100	120	100	60	0	25	200	400	480	400	120	0	1,625
	NAR - PEN	10:30 - 11:30 AM	1	5	4	4	4	2	1	21	60	40	60	80	60	25	0	60	200	240	320	240	50	0	1,110
	PEN - NAR	12:00 - 1:00 PM	1	5	4	4	4	2	1	21	60	80	125	140	100	100	100	60	400	500	560	400	200	100	2,220
	NAR - SUM	1:10 - 1:40 PM	1	5	4	4	4	2	1	21	10	20	40	40	20	20	50	10	100	160	160	80	40	50	600
	SUM - NAR	2:00 - 2:30 PM	1	5	4	4	4	2	1	21	35	35	50	50	65	20	0	35	175	200	200	260	40	0	910
	NAR - PEN	2:40 - 3:40 PM	1	5	4	4	4	2	1	21	20	12	50	20	20	15	0	20	60	200	80	80	30	0	470
	PEN - NAR	6:00 - 7:00 PM	1	5	4	4	4	2	1	21	100	50	100	150	100	80	100	100	250	400	600	400	160	100	2,010
	NAR - SUM	7:10 - 7:40 PM	1	5	4	4	4	2	1	21	20	10	20	20	10	10	0	20	50	80	80	40	20	0	290
	SUM - NAR	7:50 - 8:20 PM	1	5	4	4	4	2	1	21	10	15	20	30	10	10	0	10	75	80	120	40	20	0	345
	NAR - PEN	8:30 - 9:30 PM	1	5	4	4	4	2	1	21	10	10	10	10	5	5	0	10	50	40	40	20	10	0	170

Total Departures	108	360	372	372	168	120	70	1,570																	
Passenger Departures / month									2750	2393	4170	4540	3310	2530											

Total passengers carried											3485	10396	18245	19645	7,945	3735	2000								65,451
Total capacity																									510,250
% ship passenger utilization																									12.83%

Total Passenger Capacity per cruise					325																				
Bad weather factor less 25%															-25%	-871	-2599	-4561	-4911	-1986	-934	-500			-16,363
Total Passenger Count estimate Sch 3																									49,088

Scheduled Cruises	108	360	372	372	168	120	70	1,570																	
Total Departures 2024	108	360	372	372	168	120	70	1,570																	

Schedule 3	MAY	JUNE	JULY	AUG	SEPT	OCT	DEC	TOTAL	Ticket Rate & Revenue	Adult	25	60%	39,206	116,955	205,256	221,006	89,381	42,019	22,500
# Days	9	30	31	31	13	10	8	132	Senior	23	15%	9,017	26,900	47,209	50,831	20,558	9,664	5,175	
# Avg Op Hrs/day	12	12	12	12	12	12	6	78	Youth	20	15%	7,841	23,391	41,051	44,201	17,876	8,404	4,500	
									Child	16	10%	4,182	12,475	21,894	23,574	9,534	4,482	2,400	

TOTAL Op Hrs.	108	360	372	372	156	120	48	1536	TOTAL TICKET REVENUE	60,247	179,721	315,410	339,613	137,349	64,569	34,575				1,131,484
---------------	-----	-----	-----	-----	-----	-----	----	------	----------------------	--------	---------	---------	---------	---------	--------	--------	--	--	--	-----------

Over 50 Years of safe operations from Kelowna's downtown Kerry Park. ⁻²³⁻





Sustainability, Community,²⁵⁻ Economic Opportunity

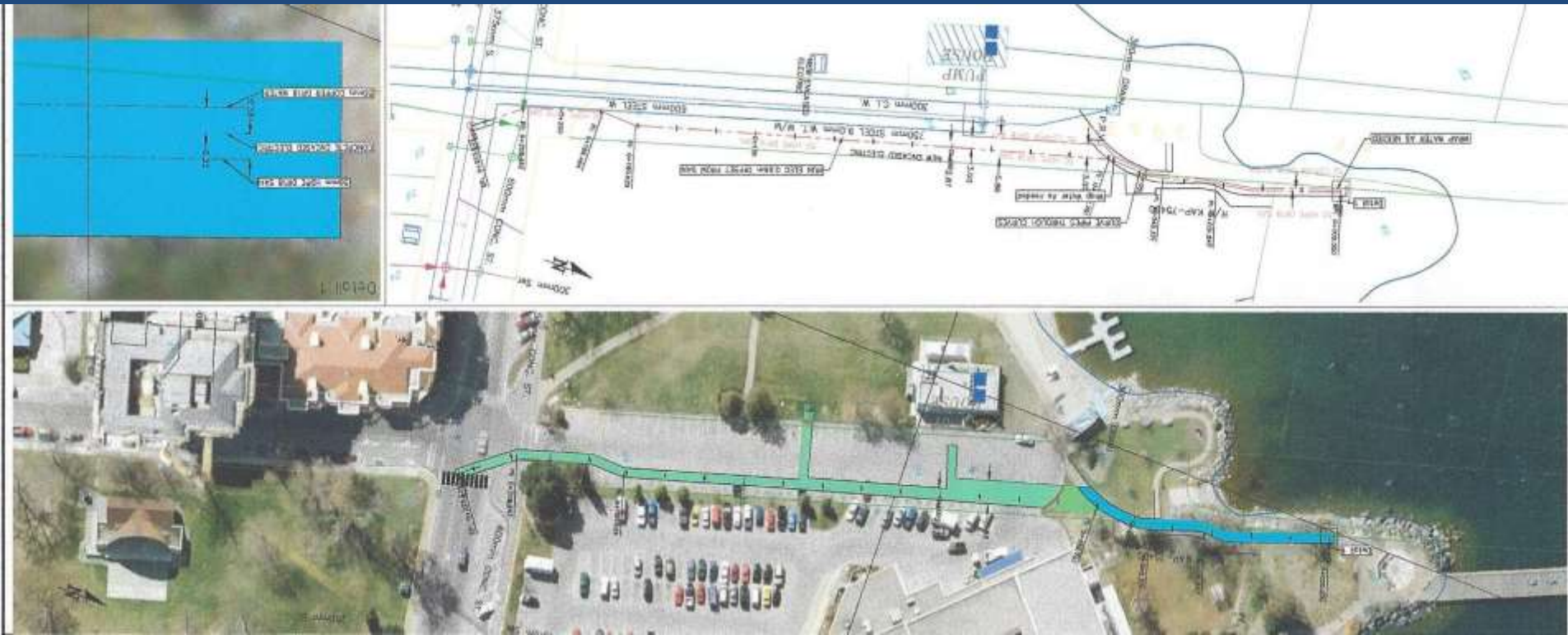
- \$3-400,000 investment into public docks, water and sanitation facilities.
- 30 - 40 new jobs, \$300,000/yr. in wages & benefits.
- \$500,000 yr. in purchases for goods and services within the community.
- Supports existing businesses in the region.
- Partner in the regional tourism plan.
- Enhances public experience – makes use of public space.

Risk Reduction

- Docks and anchorage at no cost to communities.
- Moorage rights revert back to City / Districts.
- Anchorage 100% removable with no lasting effect.
- City / District protected by regulation from BCMLNR and Transport Canada.
- Financing, permitting and construction completed before the ship arrives.

Long-term benefits for Okanagan residents & communities ²⁶

- 1) A world class tourist attraction for the South Okanagan.
- 2) A transportation link between communities, parks, wineries & resorts.
- 3) Increased safety along the waterfront parks & boardwalks – day & night.
- 4) A catalyst for tourism investment – business growth & development.
- 5) Access to Okanagan Lake for all ages – creating lifetime memories.
- 6) Honours the “Okanagan paddlewheeler” tradition.
- 7) Creates jobs, services, facilities and new opportunities for others.
- 8) Contributes towards *“a vibrant, innovative, adventurous Okanagan experience”*



Kickininee Anchorage Site Mooring Arrangement

Components based on wind, wave and current loads:

Maximum recorded winds (84 km/hr (1955 to present).

Maximum design gust speed of 126 km/hr (68 knots)

Maximum design wave height is 2.01 m with a period of 4.06s and a wave length of 25.7m

Current forces based on wind generated surface current leads to design current of 0.7 m/s (1.4 knots)

Designed by: Neil Dobie
Project Engineer for Capilano
Maritime Design Ltd.





-28-

Photos taken
January 18, 2021





We seek the support of City Council for the South Okanagan Ferry Service and for a “Western Diversification – Tourism Relief Fund” loan application.

Proposed new location
for Fintry Queen

-30-



South Okanagan Ferry Service
Penticton - Naramata - Summerland



Request to Appear as a Delegation

Preferred Council Meeting Date: March 15, 2022

Second choice(s): _____

Subject matter: 269 Panther Squadron Air Cadets

Name of person(s) making presentation:

Tom Iannella, Lt. Col retired. Chairman, Penticton Air Cadets

Address: _____

Phone:

Email:

Please provide details of your presentation or request of Council here: (or provide a detailed attachment)

269 Panther Squadron Air Cadets would like to do a presentation on the goals and objectives of the Air Cadets in our community. For this presentation we would like to offer our services to clean up areas of Penticton by collecting debris and waste in areas that you can assign to our Cadets. We would wear identifying clothing and involve the media in order to get exposure and assist us with recruiting. I will be attending with some Cadets

Please note:

- Due to COVID-19, meetings may be held electronically. Participation details will be confirmed with you prior to the meeting.
- This form and submissions will become part of the public record.
- The Mayor has the authority to determine if the subject matter warrants the delegation to appear before Council and may determine at which meeting.
- Please submit this completed form at your earliest convenience. Written Requests to Appear are to be received by the Corporate Officer, no later than noon Monday, one week prior to the Council meeting. Please include a copy of all materials that will be discussed.
- If you'd like to share a PowerPoint with Council, email it to the Corporate Officer by 9:30 a.m. Wednesday prior to the Council meeting to be included with the Agenda. If presenting via zoom, please be prepared to share your screen.
- **Delegations are limited to 5 minutes.**

Corporate Office
Angie Collison, Corporate Officer
171 Main Street, Penticton, B.C., V2A 5A9

Phone: 250-490-2410
Fax: 250-490-2402
angie.collison@penticton.ca