

## Public water access during Okanagan Lake high water event

(Penticton BC – May 18, 2018) – The following information is being provided to assist residents and visitors in accessing Okanagan Lake while high-water protection measures are in place along Penticton’s Okanagan Lake waterfront. Please note the following:

- The high-water protection measures are necessary to prevent damage to landscaped areas and built infrastructure.
- Once construction of the high-water protection measures is completed, the public will be able to use the beach on Okanagan Lake from the SS Sicamous to the Peach, in the area between gabions and the walkway.
- Direct, unobstructed access, from Lakeshore Drive, to the water, will be restricted due to the height of the gabion baskets, however access to the water along Okanagan Lake will still be available at:
  - the SS Sicamous
  - the stairs from the elevated walkway opposite 274 and 434 Lakeshore Drive W
  - along the old retaining Wall from 440 to 488 Lakeshore Drive W
  - along the west side of Rotary Park from the ramp on the north side of the Peach to the Romp Statue
  - Marina Way Beach
- As a reminder, Skaha Beach has no restrictions and remains in excellent condition.

“Once the high-water begins to recede to the point where wave action will not damage infrastructure, the City will start taking steps to remove the gabions and return regular access to the beach”, said General Manager of Infrastructure, Mitch Moroziuk. “The removal work will commence at the locations along Okanagan Beach where there are stairs and ramps. As the water recedes further, the remainder of the gabion wall will be removed.”

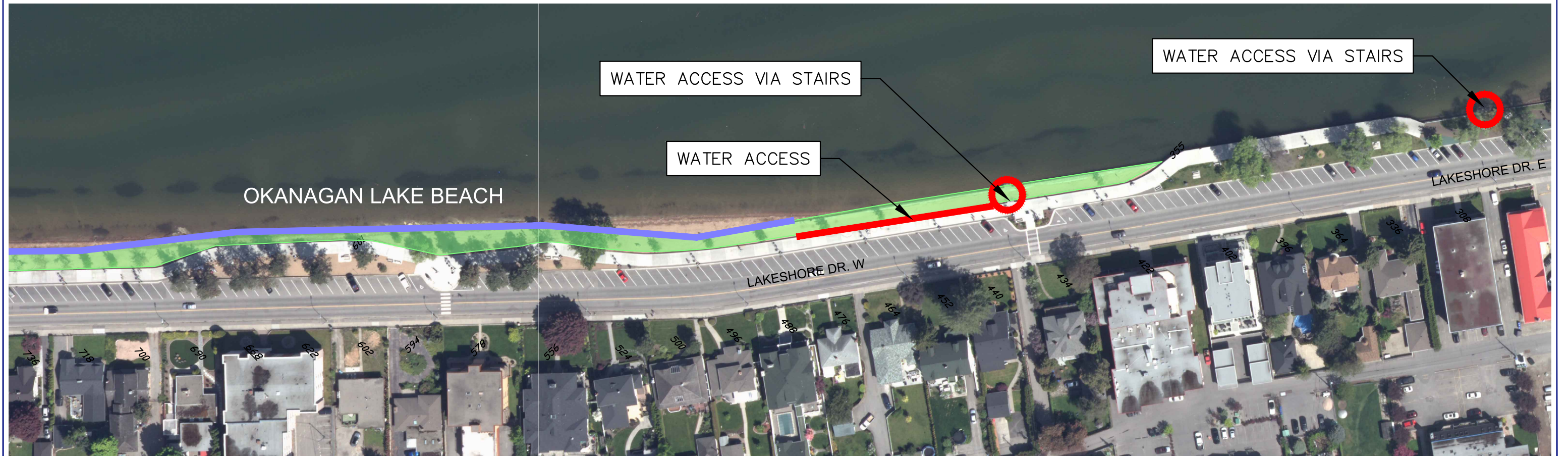
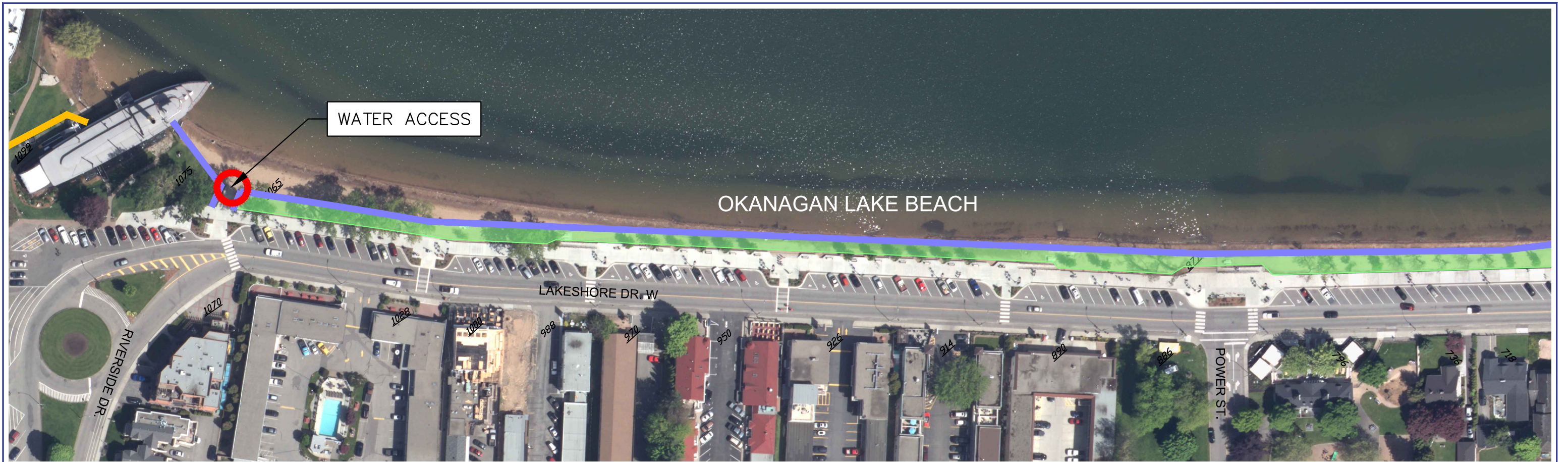
For more information, please see the attached map.

-30-

### Contact:

Mitch Moroziuk  
General Manager of Infrastructure  
City of Penticton  
250 490-2515







WATER ACCESS

WATER ACCESS VIA STAIRS

ROTARY PARK

LAKESHORE DR. E



# ROTARY PARK BEACH ACCESS MAP

- Water Access
- Gabion Wall
- Tiger Dam
- Beach Accessible via Walkway

Scale: 1:1000  
 Plot Date: 5/18/2018  
 Drawn By: TP





NO BEACH OR WATER ACCESS

OKANAGAN LAKE PARK

